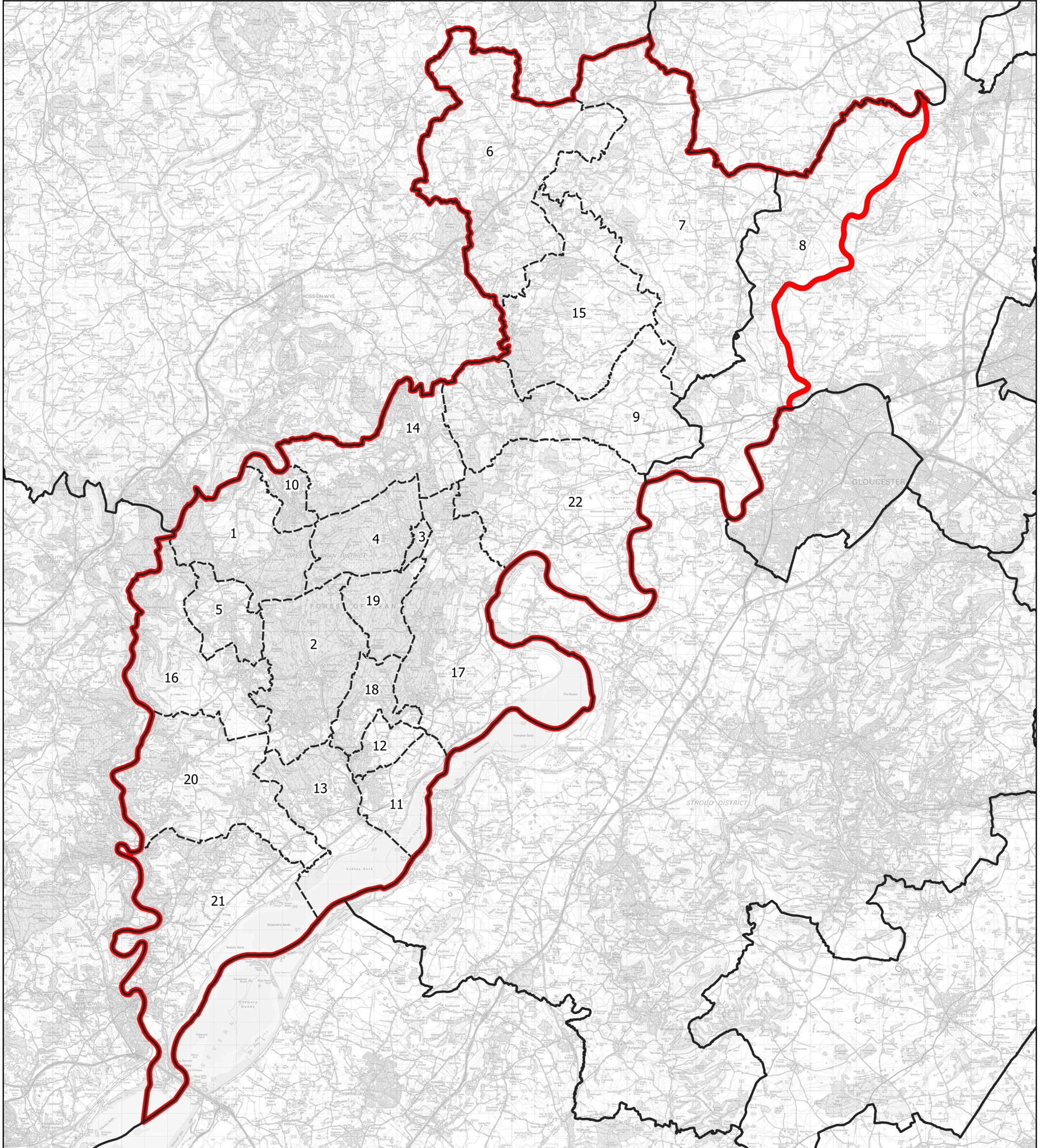


# Boundary Commission for England - Initial Proposals for the South West Region

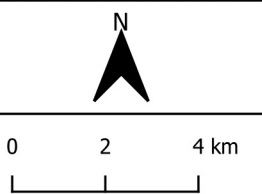
Forest of Dean County Constituency - Electorate 71,510



**Wards:**

- |                           |                                     |                       |
|---------------------------|-------------------------------------|-----------------------|
| 1 Berry Hill              | 9 Longhope & Huntley                | 16 Newland & Sling    |
| 2 Bream                   | 10 Lydbrook                         | 17 Newnham            |
| 3 Cinderford East         | 11 Lydney East                      | 18 Pillowell          |
| 4 Cinderford West         | 12 Lydney North                     | 19 Ruspidge           |
| 5 Coleford                | 13 Lydney West & Aylburton          | 20 St. Briavels       |
| 6 Dymock                  | 14 Mitcheldean, Ruardean & Drybrook | 21 Tidenham           |
| 7 Hartpury & Redmarley    | 15 Newent & Taynton                 | 22 Westbury-on-Severn |
| 8 Highnam with Haw Bridge |                                     |                       |

- Constituency
- Local Authorities
- Wards



© Crown copyright and database rights 2021 OS 100018289. You are permitted to use this data solely to enable you to respond to, or interact with, the organisation that provided you with the data. You are not permitted to copy, sub-licence, distribute or sell any of this data to third parties in any form. Third party rights to enforce the terms of this licence shall be reserved to OS.

## Forest of Dean County Constituency