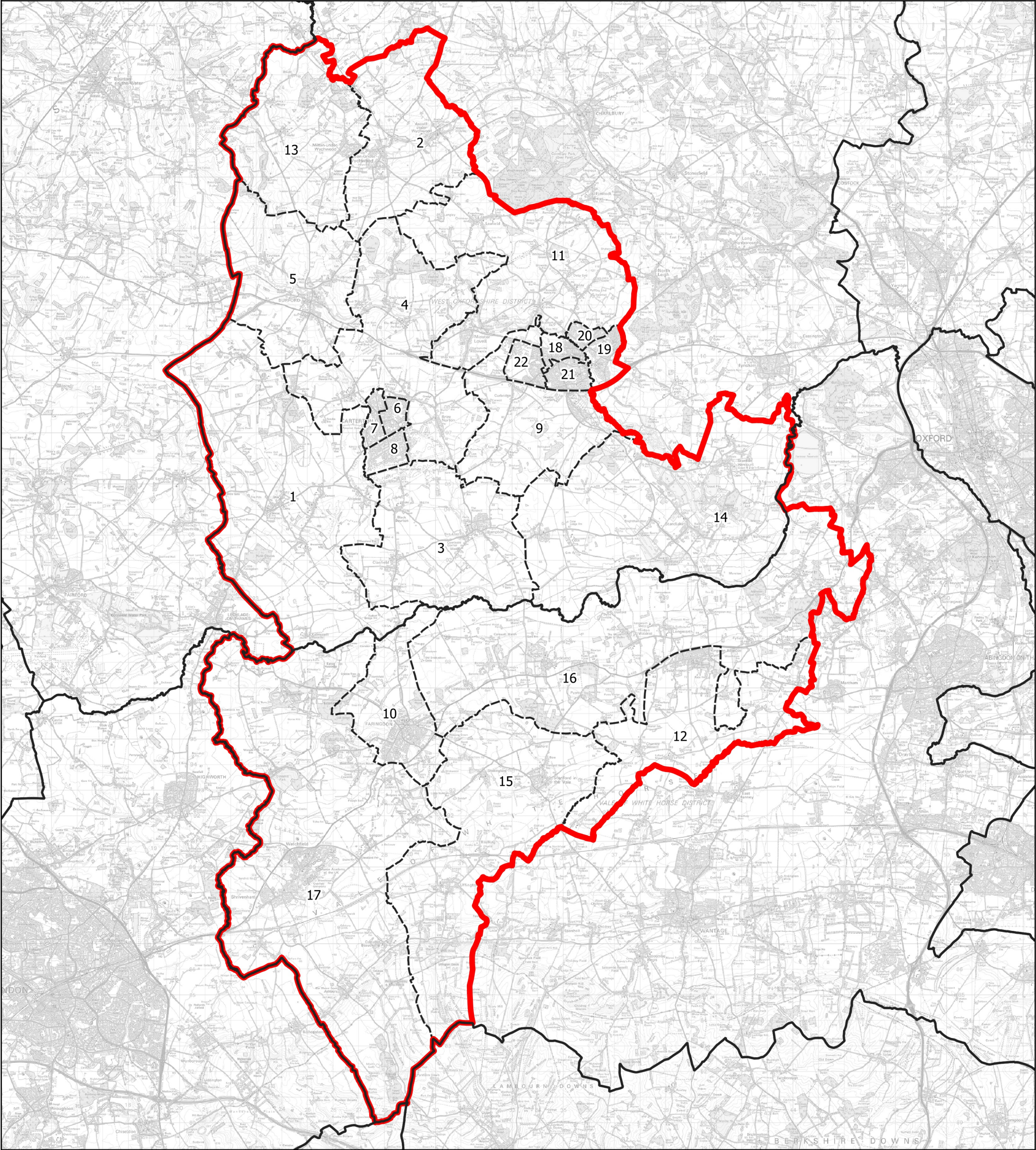


Boundary Commission for England - Initial Proposals for the South East Region

Witney County Constituency - Electorate 72,938



| | | | | |
|----------------------------|--|----------------------------|---|--|
| Wards: | | | <div><div></div> Constituency</div> <div><div></div> Local Authorities</div> <div><div></div> Wards</div> | <div><div>N</div></div> <div><div>024 km</div></div> |
| 1 Alvescot and Filkins | 9 Ducklington | 15 Stanford | | |
| 2 Ascott and Shipton | 10 Faringdon | 16 Thames | | |
| 3 Bampton and Clanfield | 11 Hailey, Minster Lovell and Leafield | 17 Watchfield & Shrivenham | | |
| 4 Brize Norton and Shilton | 12 Kingston Bagpuize | 18 Witney Central | | |
| 5 Burford | 13 Milton-under-Wychwood | 19 Witney East | | |
| 6 Carterton North East | 14 Standlake, Aston and Stanton Harcourt | 20 Witney North | | |
| 7 Carterton North West | | 21 Witney South | | |
| 8 Carterton South | | 22 Witney West | | |

© Crown copyright and database rights 2021 OS 100018289. You are permitted to use this data solely to enable you to respond to, or interact with, the organisation that provided you with the data. You are not permitted to copy, sub-licence, distribute or sell any of this data to third parties in any form. Third party rights to enforce the terms of this licence shall be reserved to OS.

Witney County Constituency