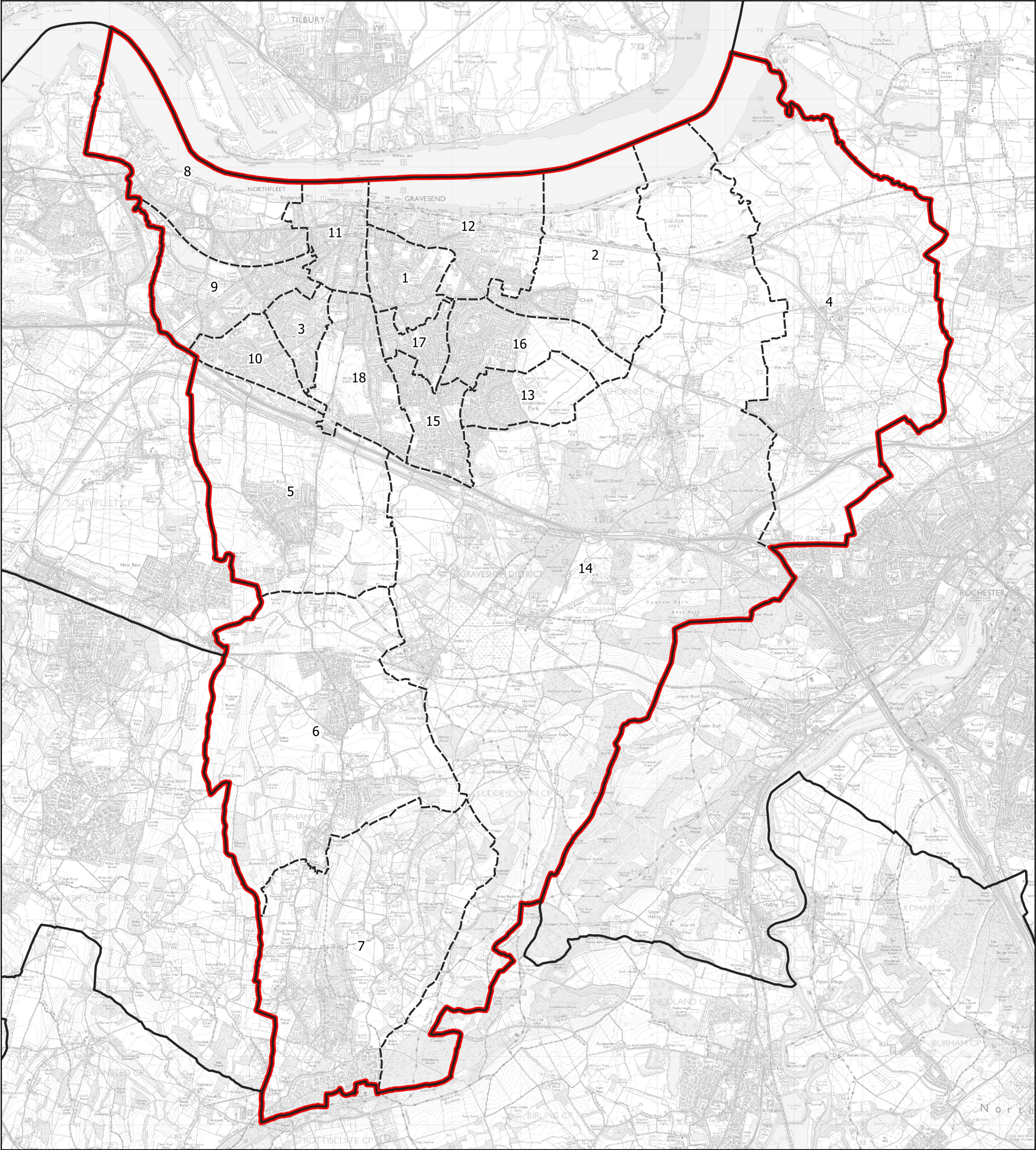


Boundary Commission for England - Initial Proposals for the South East Region

Gravesham County Constituency - Electorate 72,866



| | | | | |
|--------------------------|--------------------|----------------------------------|---|--|
| Wards: | | | <div><div></div> Constituency</div> <div><div></div> Local Authorities</div> <div><div></div> Wards</div> | <div><div>N</div></div> <div><div>00.81.6</div><div>km</div></div> |
| 1 Central | 8 Northfleet North | 14 Shorne, Cobham and Luddesdown | | |
| 2 Chalk | 9 Northfleet South | 15 Singlewell | | |
| 3 Coldharbour | 10 Painters Ash | 16 Westcourt | | |
| 4 Higham | 11 Pelham | 17 Whitehill | | |
| 5 Istead Rise | 12 Riverside | 18 Woodlands | | |
| 6 Meopham North | 13 Riverview | | | |
| 7 Meopham South and Vigo | | | | |

© Crown copyright and database rights 2021 OS 100018289. You are permitted to use this data solely to enable you to respond to, or interact with, the organisation that provided you with the data. You are not permitted to copy, sub-licence, distribute or sell any of this data to third parties in any form. Third party rights to enforce the terms of this licence shall be reserved to OS.

Gravesham County Constituency