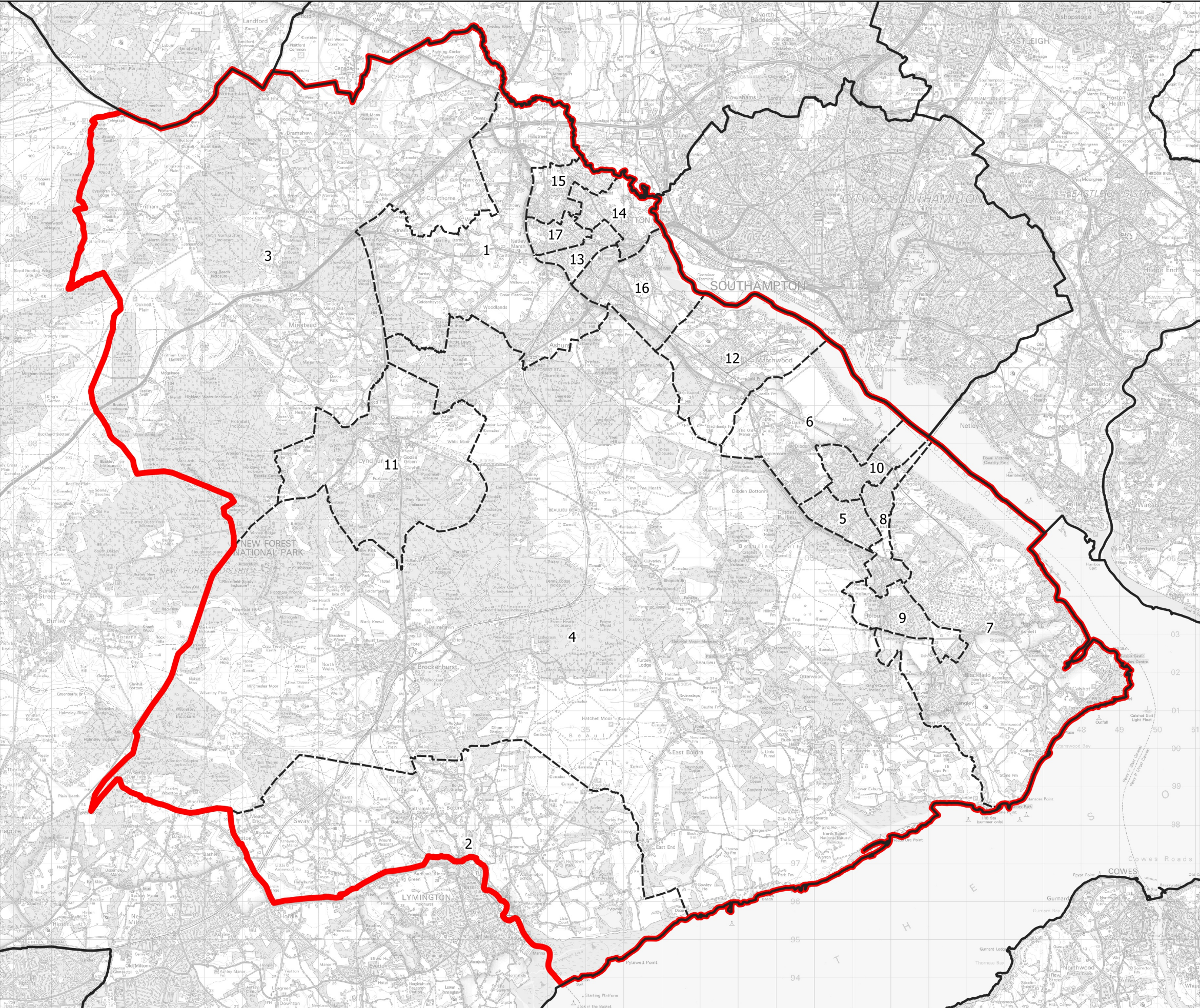


Boundary Commission for England - Initial Proposals for the South East Region

East New Forest County Constituency - Electorate 73,823



- Wards:
- 1 Ashurst, Copythorne South and Netley Marsh
 - 2 Boldre and Sway
 - 3 Bramshaw, Copythorne North and Minstead
 - 4 Brockenhurst and Forest South East
 - 5 Butts Ash and Dibden Purlieu
 - 6 Dibden and Hythe East
 - 7 Fawley, Blackfield and Langley
 - 8 Furzedown and Hardley
 - 9 Holbury and North Blackfield
 - 10 Hythe West and Langdown
 - 11 Lyndhurst
 - 12 Marchwood
 - 13 Totton Central
 - 14 Totton East
 - 15 Totton North
 - 16 Totton South
 - 17 Totton West



- Constituency
- Local Authorities
- Wards

0 1 2 km



© Crown copyright and database rights 2021 OS 100018289. You are permitted to use this data solely to enable you to respond to, or interact with, the organisation that provided you with the data. You are not permitted to copy, sub-licence, distribute or sell any of this data to third parties in any form. Third party rights to enforce the terms of this licence shall be reserved to OS.