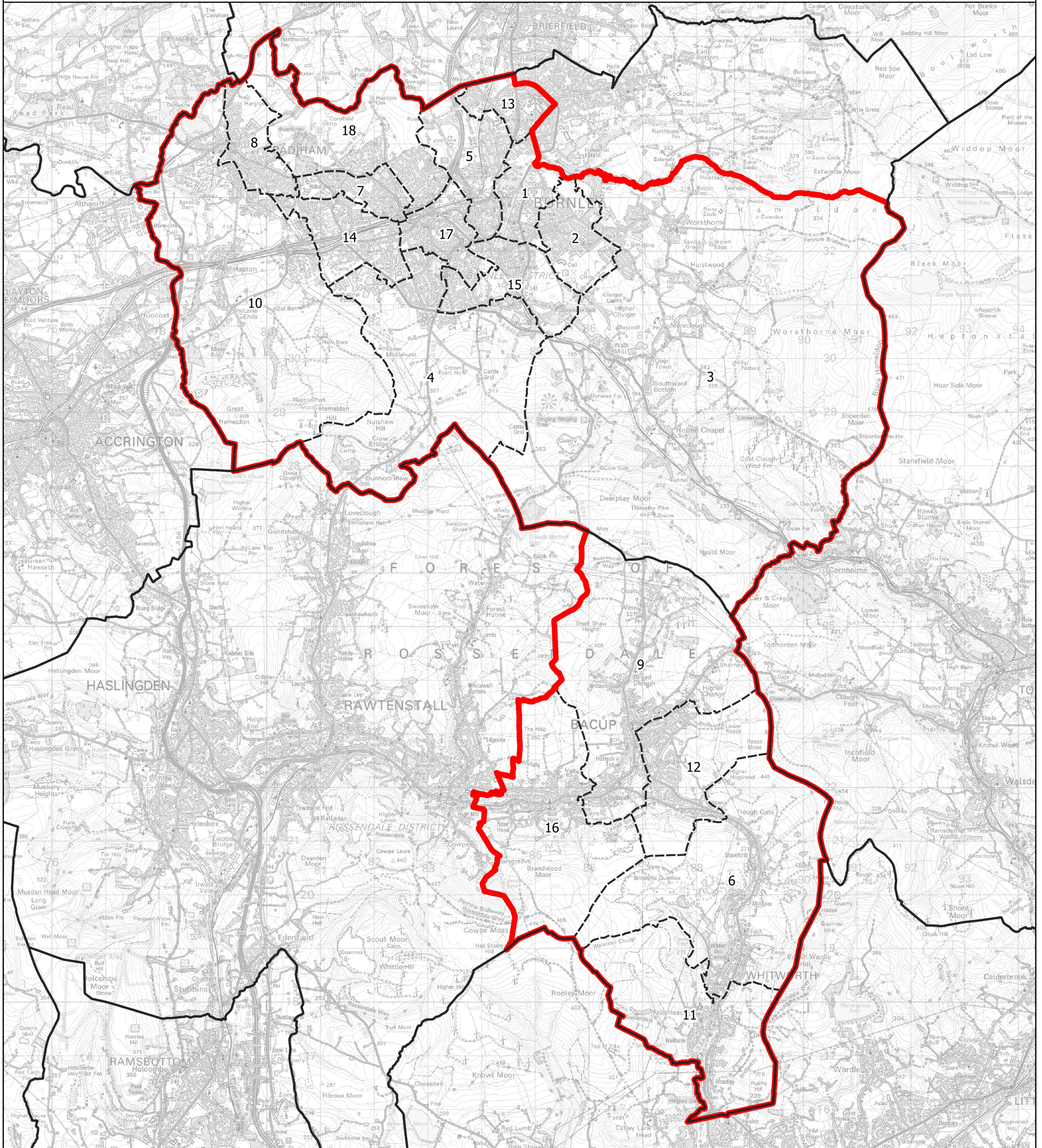


Boundary Commission for England - Initial Proposals for the North West Region

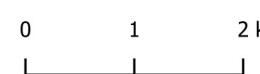
Burnley and Bacup County Constituency - Electorate 73,318



Wards:

- | | | |
|-------------------------------|-------------------------|---------------------------------|
| 1 Bank Hall | 7 Gannow | 14 Rosegrove with Lowerhouse |
| 2 Brunshaw | 8 Gawthorpe | 15 Rosehill with Burnley Wood |
| 3 Cliviger with Worsthorne | 9 Greensclough | 16 Stacksteads |
| 4 Coal Clough with Deerplay | 10 Hapton with Park | 17 Trinity |
| 5 Daneshouse with Stoneyholme | 11 Healey and Whitworth | 18 Whittlefield with Ightenhill |
| 6 Facit and Shawforth | 12 Irwell | |
| | 13 Queensgate | |

- Constituency
- Local Authorities
- Wards



© Crown copyright and database rights 2021 OS 100018289. You are permitted to use this data solely to enable you to respond to, or interact with, the organisation that provided you with the data. You are not permitted to copy, sub-licence, distribute or sell any of this data to third parties in any form. Third party rights to enforce the terms of this licence shall be reserved to OS.

Burnley and Bacup County Constituency