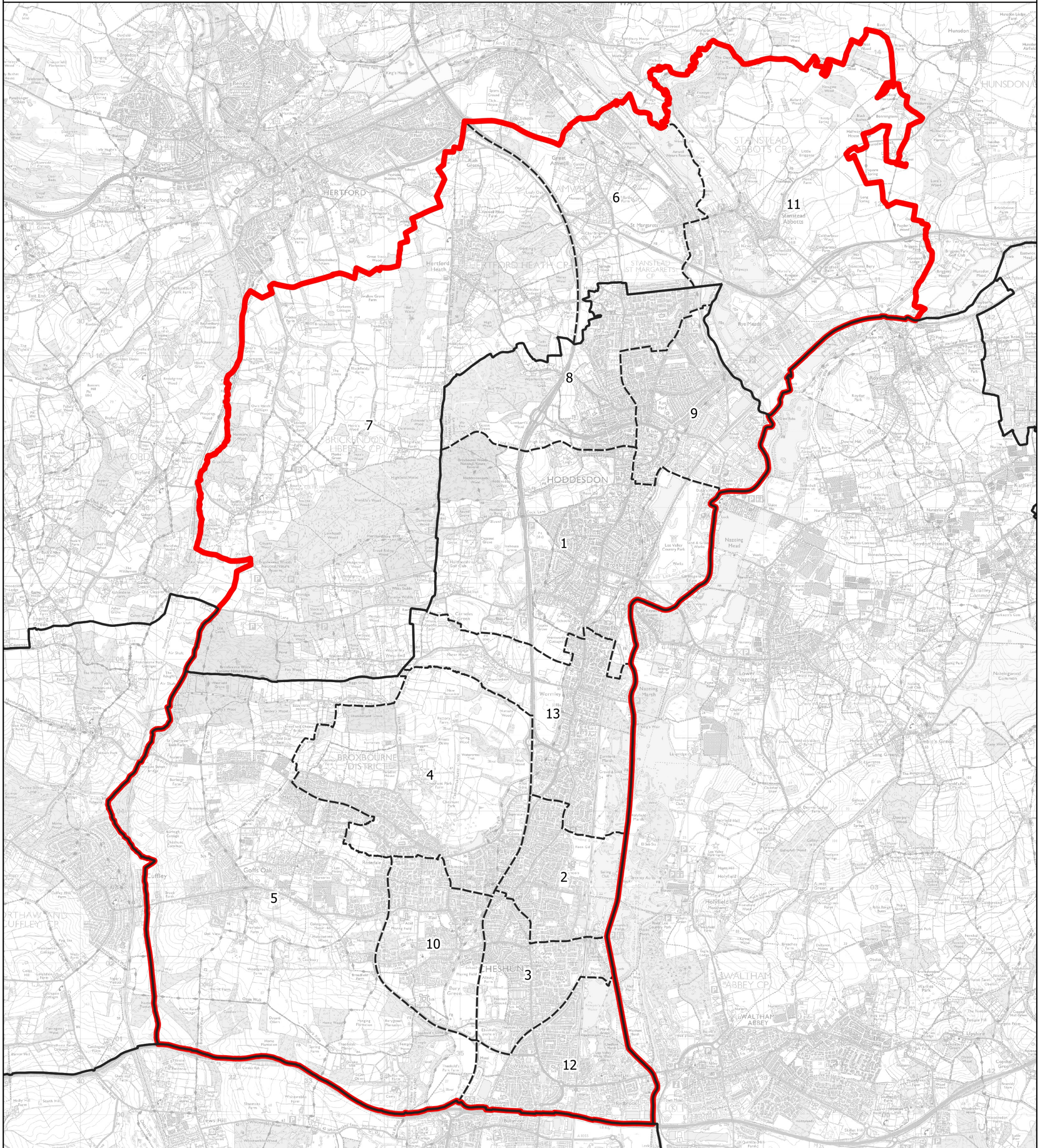


Boundary Commission for England - Initial Proposals for the Eastern Region

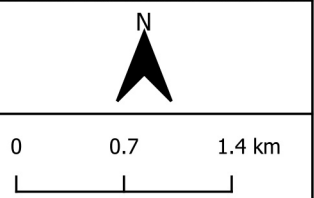
Broxbourne County Constituency - Electorate 75,454



Wards:

- | | | |
|----------------------------------|-------------------------------|-------------------------|
| 1 Broxbourne and Hoddesdon South | 6 Great Amwell | 12 Waltham Cross |
| 2 Cheshunt North | 7 Hertford Heath | 13 Wormley and Turnford |
| 3 Cheshunt South and Theobalds | 8 Hoddesdon North | |
| 4 Flamstead End | 9 Hoddesdon Town and Rye Park | |
| 5 Goffs Oak | 10 Rosedale and Bury Green | |
| | 11 Stanstead Abbots | |

- Constituency
- Local Authorities
- Wards



© Crown copyright and database rights 2021 OS 100018289. You are permitted to use this data solely to enable you to respond to, or interact with, the organisation that provided you with the data. You are not permitted to copy, sub-licence, distribute or sell any of this data to third parties in any form. Third party rights to enforce the terms of this licence shall be reserved to OS.

Broxbourne County Constituency