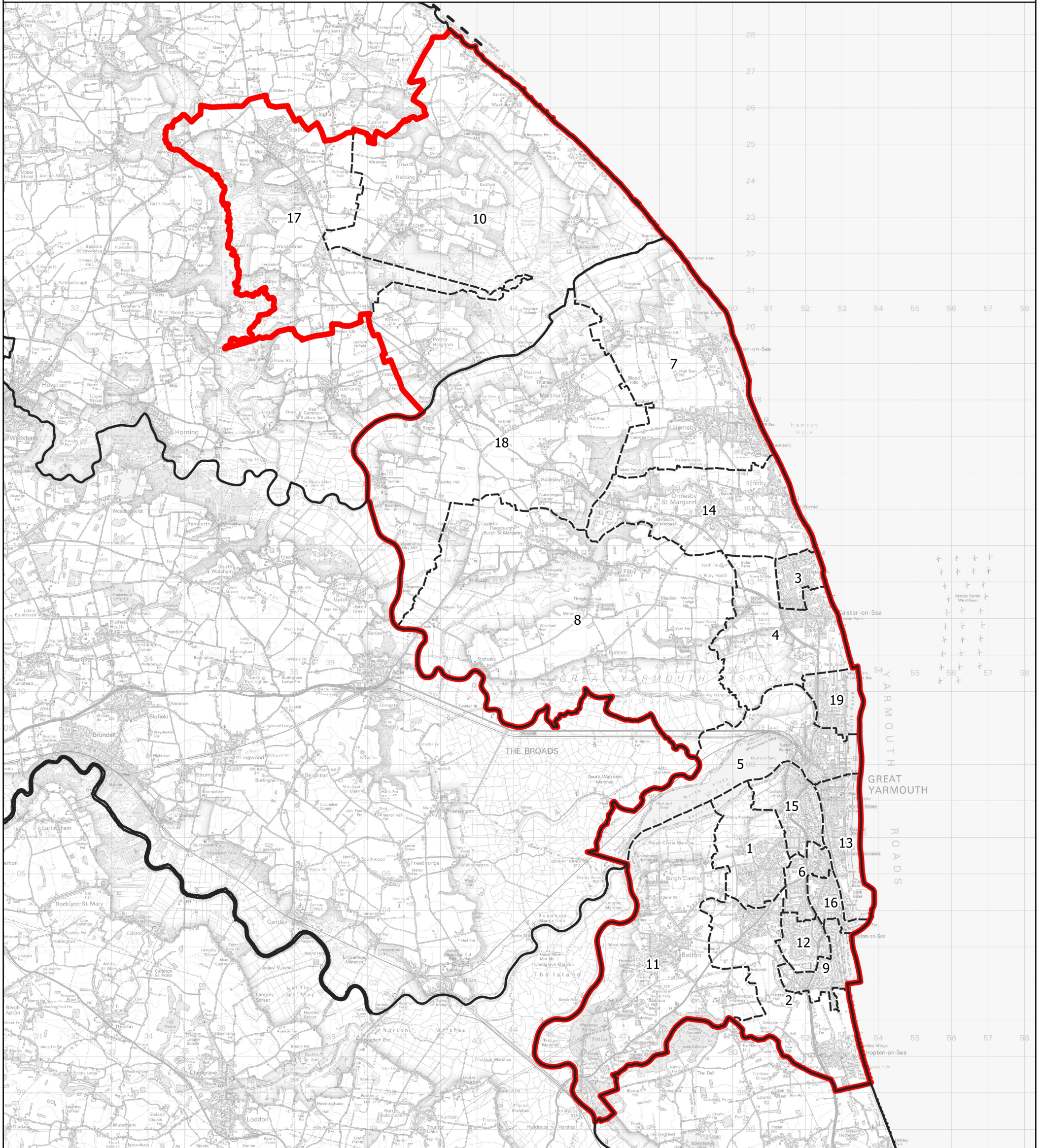





Boundary Commission for England - Initial Proposals for the Eastern Region

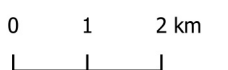
Great Yarmouth County Constituency - Electorate 76,713



Wards:

- | | | |
|-----------------------------|----------------|--------------------------|
| 1 Bradwell North | 8 Fleggburgh | 15 Southtown and Cobholm |
| 2 Bradwell South and Hopton | 9 Gorleston | 16 St. Andrews |
| 3 Caister North | 10 Hickling | 17 Stalham |
| 4 Caister South | 11 Lothingland | 18 West Flegg |
| 5 Central And Northgate | 12 Magdalen | 19 Yarmouth North |
| 6 Claydon | 13 Nelson | |
| 7 East Flegg | 14 Ormesby | |

-  Constituency
-  Local Authorities
-  Wards



© Crown copyright and database rights 2021 OS 100018289. You are permitted to use this data solely to enable you to respond to, or interact with, the organisation that provided you with the data. You are not permitted to copy, sub-licence, distribute or sell any of this data to third parties in any form. Third party rights to enforce the terms of this licence shall be reserved to OS.

Great Yarmouth County Constituency