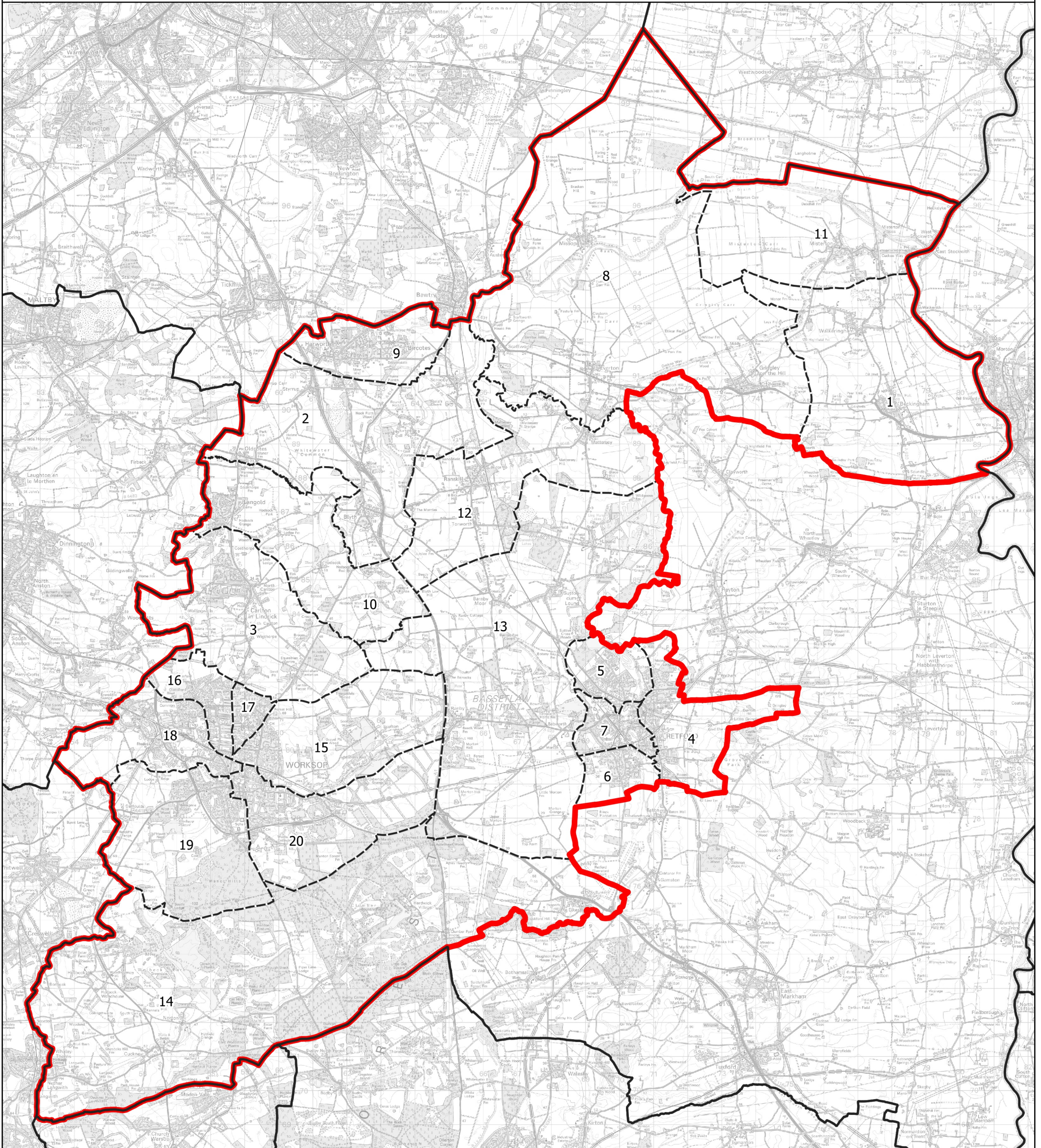


Boundary Commission for England - Initial Proposals for the East Midlands Region

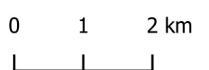
Worksop and Retford County Constituency - Electorate 75,773



Wards:

- | | | |
|----------------------|--------------|-----------------------|
| 1 Beekingham | 8 Everton | 15 Worksop East |
| 2 Blyth | 9 Harworth | 16 Worksop North |
| 3 Carlton | 10 Langold | 17 Worksop North East |
| 4 East Retford East | 11 Misterton | 18 Worksop North West |
| 5 East Retford North | 12 Ranskill | 19 Worksop South |
| 6 East Retford South | 13 Sutton | 20 Worksop South East |
| 7 East Retford West | 14 Welbeck | |

- Constituency
- Local Authorities
- Wards



© Crown copyright and database rights 2021 OS 100018289. You are permitted to use this data solely to enable you to respond to, or interact with, the organisation that provided you with the data. You are not permitted to copy, sub-licence, distribute or sell any of this data to third parties in any form. Third party rights to enforce the terms of this licence shall be reserved to OS.

Worksop and Retford County Constituency