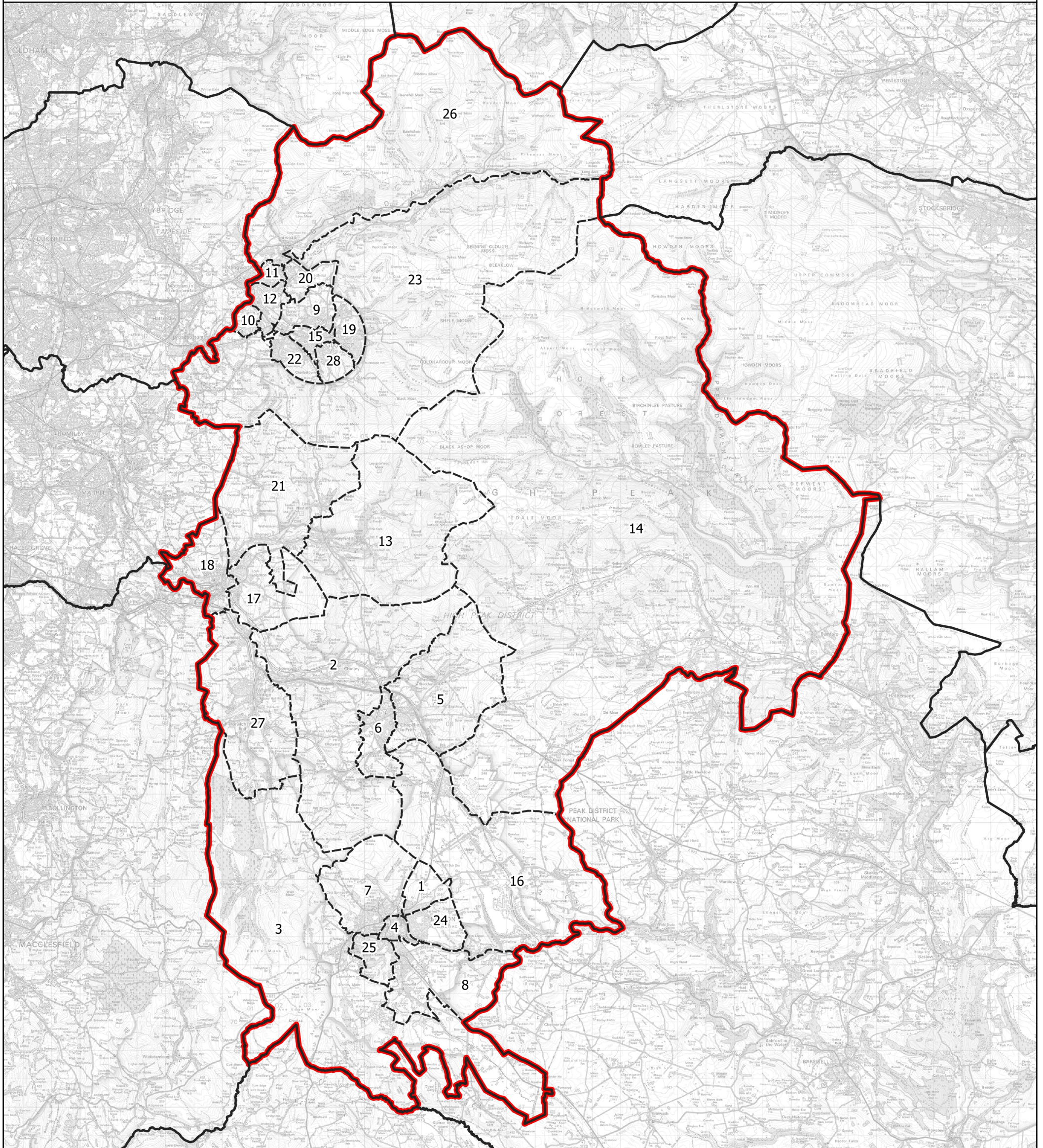


Boundary Commission for England - Initial Proposals for the East Midlands Region

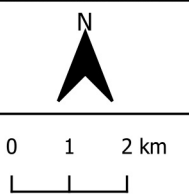
High Peak County Constituency - Electorate 73,960



Wards:

- | | | | |
|------------------|-------------------|-------------------|------------------|
| 1 Barms | 8 Cote Heath | 15 Howard Town | 22 Simmondley |
| 2 Blackbrook | 9 Dinting | 16 Limestone Peak | 23 St. John's |
| 3 Burbage | 10 Gamesley | 17 New Mills East | 24 Stone Bench |
| 4 Buxton Central | 11 Hadfield North | 18 New Mills West | 25 Temple |
| 5 Chapel East | 12 Hadfield South | 19 Old Glossop | 26 Tintwistle |
| 6 Chapel West | 13 Hayfield | 20 Padfield | 27 Whaley Bridge |
| 7 Corbar | 14 Hope Valley | 21 Sett | 28 Whitfield |

- Constituency
- Local Authorities
- Wards



© Crown copyright and database rights 2021 OS 100018289. You are permitted to use this data solely to enable you to respond to, or interact with, the organisation that provided you with the data. You are not permitted to copy, sub-licence, distribute or sell any of this data to third parties in any form. Third party rights to enforce the terms of this licence shall be reserved to OS.

High Peak County Constituency