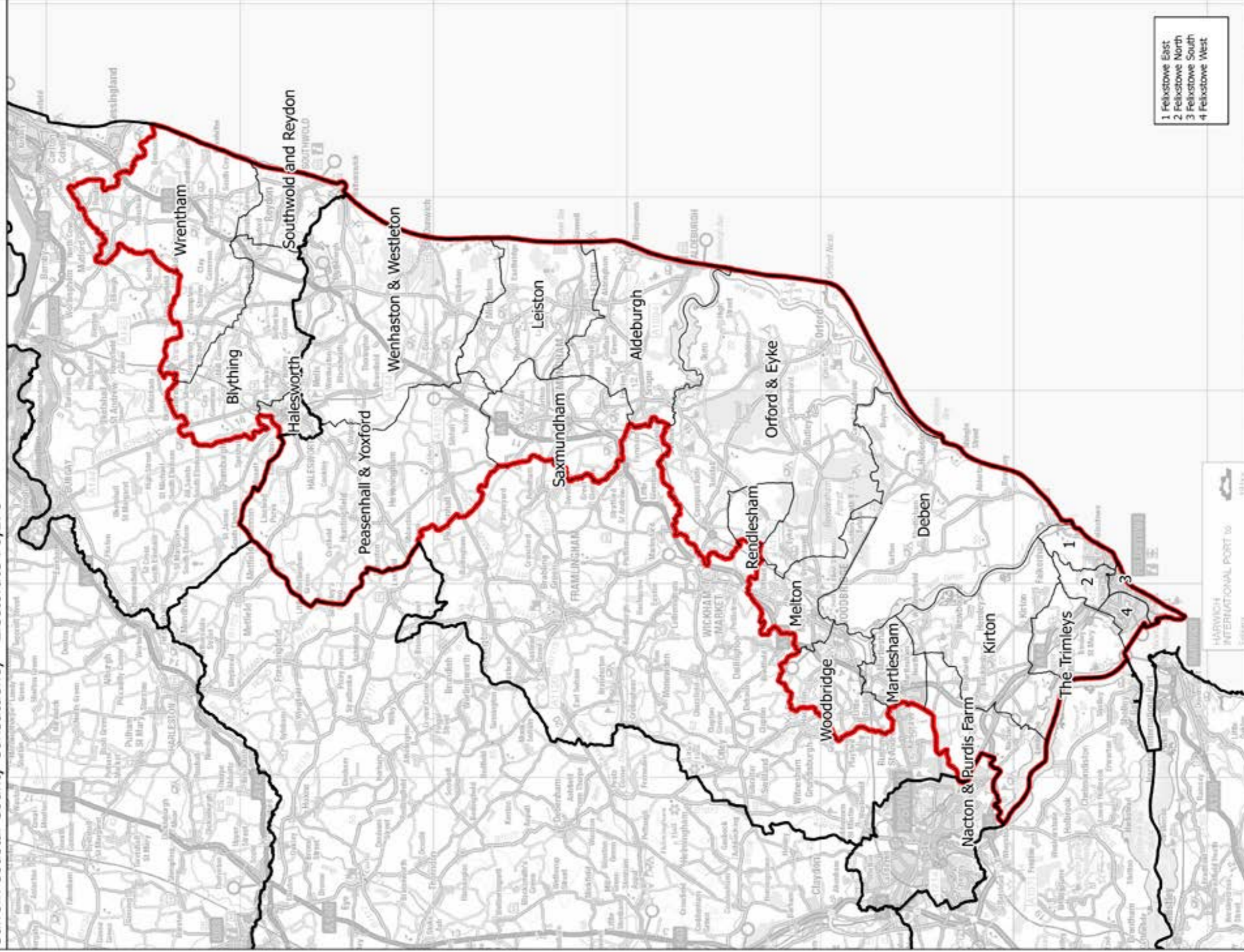


Boundary Commission for England - Initial Proposals for the Eastern Region
 Suffolk Coastal County Constituency - Electorate 76,178



— Constituency — Local authorities — Wards

1 Felixstowe East
 2 Felixstowe North
 3 Felixstowe South
 4 Felixstowe West

This map is reproduced from Ordnance Survey material with the permission of Ordnance Survey on behalf of the controller of Her Majesty's Stationery Office (C) Crown Copyright 2016. All rights reserved. Unauthorised reproduction infringes Crown copyright and may lead to prosecution or civil proceedings. Boundary Commission for England 100018098, 2016.