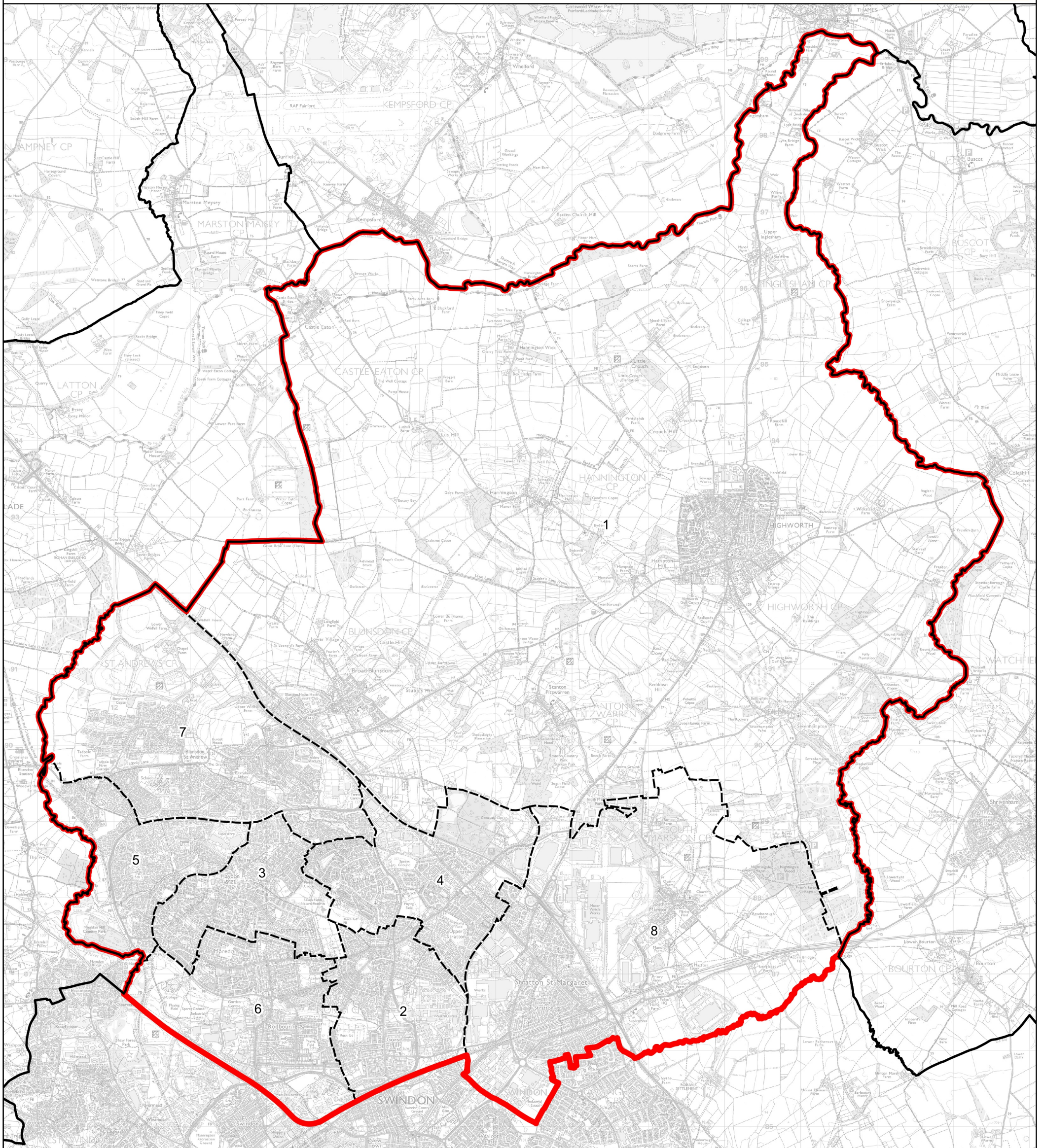



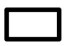
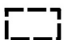
Boundary Commission for England - Revised Proposals for the South West Region

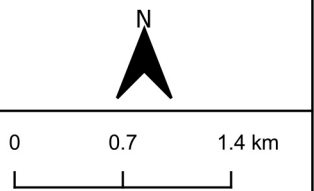
Swindon North County Constituency - Electorate 72,163



Wards:

- | | |
|------------------------------|----------------------------------|
| 1 Blunsdon and Highworth | 6 Rodbourne Cheney |
| 2 Gorse Hill and Pinehurst | 7 St. Andrews |
| 3 Haydon Wick | 8 St. Margaret and South Marston |
| 4 Penhill and Upper Stratton | |
| 5 Priory Vale | |

-  Constituency
-  Local Authorities
-  Wards



© Crown copyright and database rights 2022 OS 100018289. You are permitted to use this data solely to enable you to respond to, or interact with, the organisation that provided you with the data. You are not permitted to copy, sub-licence, distribute or sell any of this data to third parties in any form. Third party rights to enforce the terms of this licence shall be reserved to OS.

Swindon North County Constituency