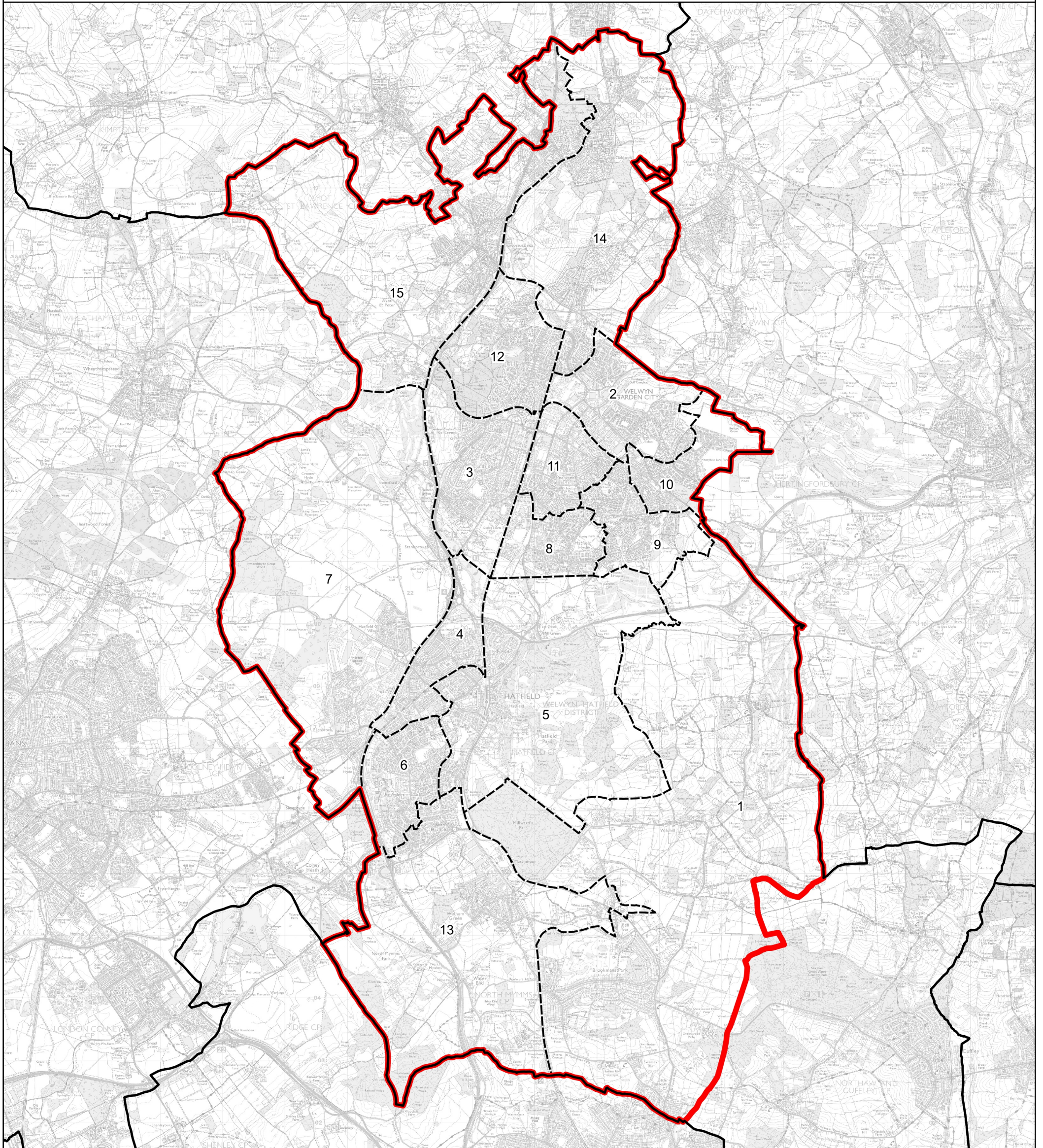


Boundary Commission for England - Revised Proposals for the Eastern Region

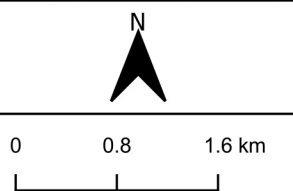
Welwyn Hatfield County Constituency - Electorate 74,535



Wards:

- | | | |
|---------------------------------|---------------------|----------------------------------|
| 1 Brookmans Park & Little Heath | 7 Hatfield Villages | 13 Welham Green & Hatfield South |
| 2 Haldens | 8 Hollybush | 14 Welwyn East |
| 3 Handside | 9 Howlands | 15 Welwyn West |
| 4 Hatfield Central | 10 Panshanger | |
| 5 Hatfield East | 11 Peartree | |
| 6 Hatfield South West | 12 Sherrards | |

- Constituency
- Local Authorities
- Wards



© Crown copyright and database rights 2022 OS 100018289. You are permitted to use this data solely to enable you to respond to, or interact with, the organisation that provided you with the data. You are not permitted to copy, sub-licence, distribute or sell any of this data to third parties in any form. Third party rights to enforce the terms of this licence shall be reserved to OS.

Welwyn Hatfield County Constituency