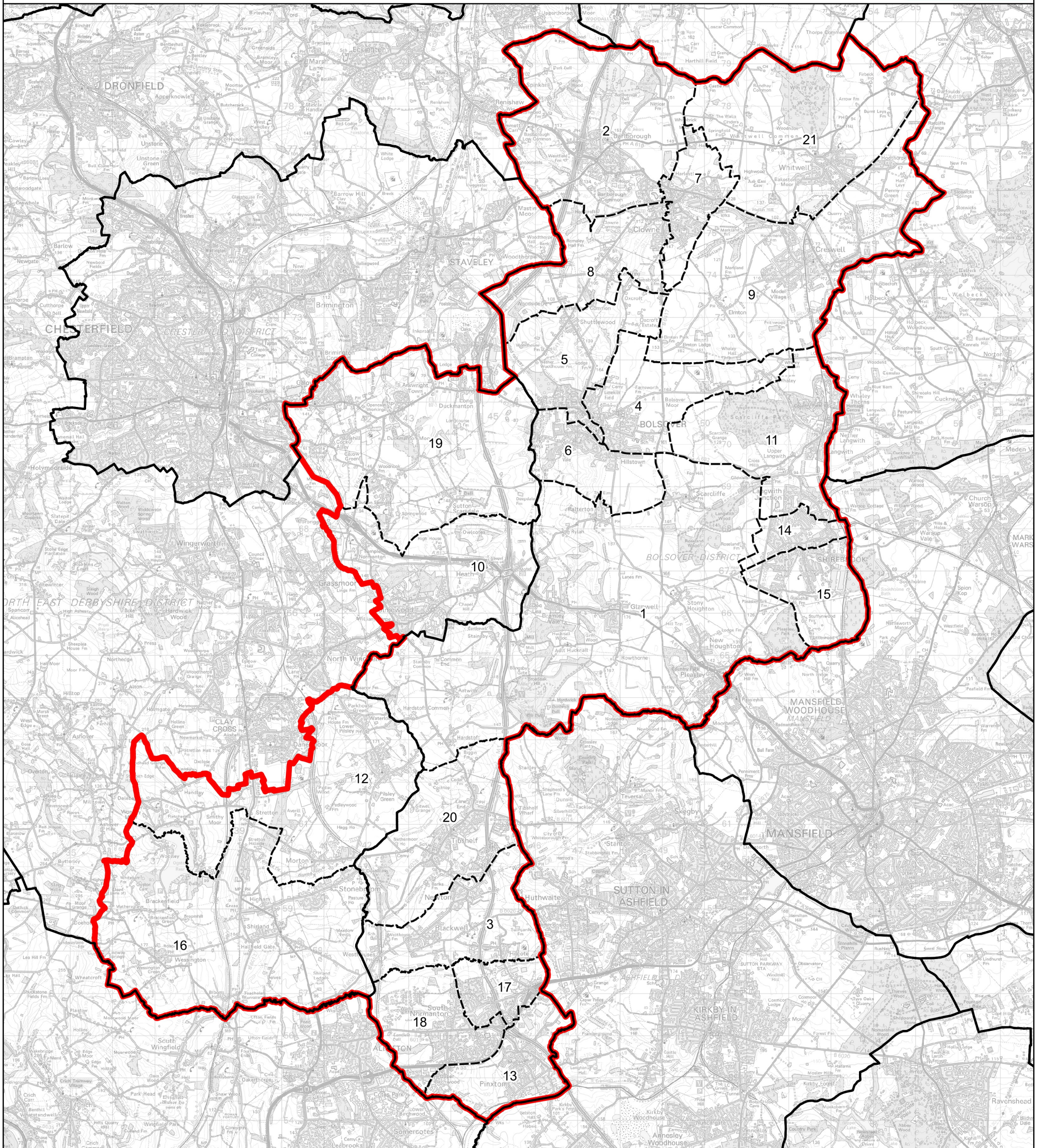


Boundary Commission for England - Revised Proposals for the East Midlands Region

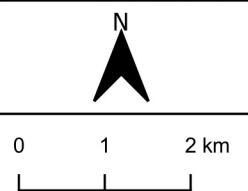
Bolsover County Constituency - Electorate 74,680



Wards:

- | | | | |
|--------------------------------|------------------------|-------------------------|-------------|
| 1 Ault Hucknall | 7 Clowne East | 14 Shirebrook North | 20 Tibshelf |
| 2 Barlborough | 8 Clowne West | 15 Shirebrook South | 21 Whitwell |
| 3 Blackwell | 9 Elmton-with-Creswell | 16 Shirland | |
| 4 Bolsover East | 10 Holmewood & Heath | 17 South Normanton East | |
| 5 Bolsover North & Shuttlewood | 11 Langwith | 18 South Normanton West | |
| 6 Bolsover South | 12 Pilsley & Morton | 19 Sutton | |

- Constituency
- Local Authorities
- Wards



© Crown copyright and database rights 2022 OS 100018289. You are permitted to use this data solely to enable you to respond to, or interact with, the organisation that provided you with the data. You are not permitted to copy, sub-licence, distribute or sell any of this data to third parties in any form. Third party rights to enforce the terms of this licence shall be reserved to OS.

Bolsover County Constituency