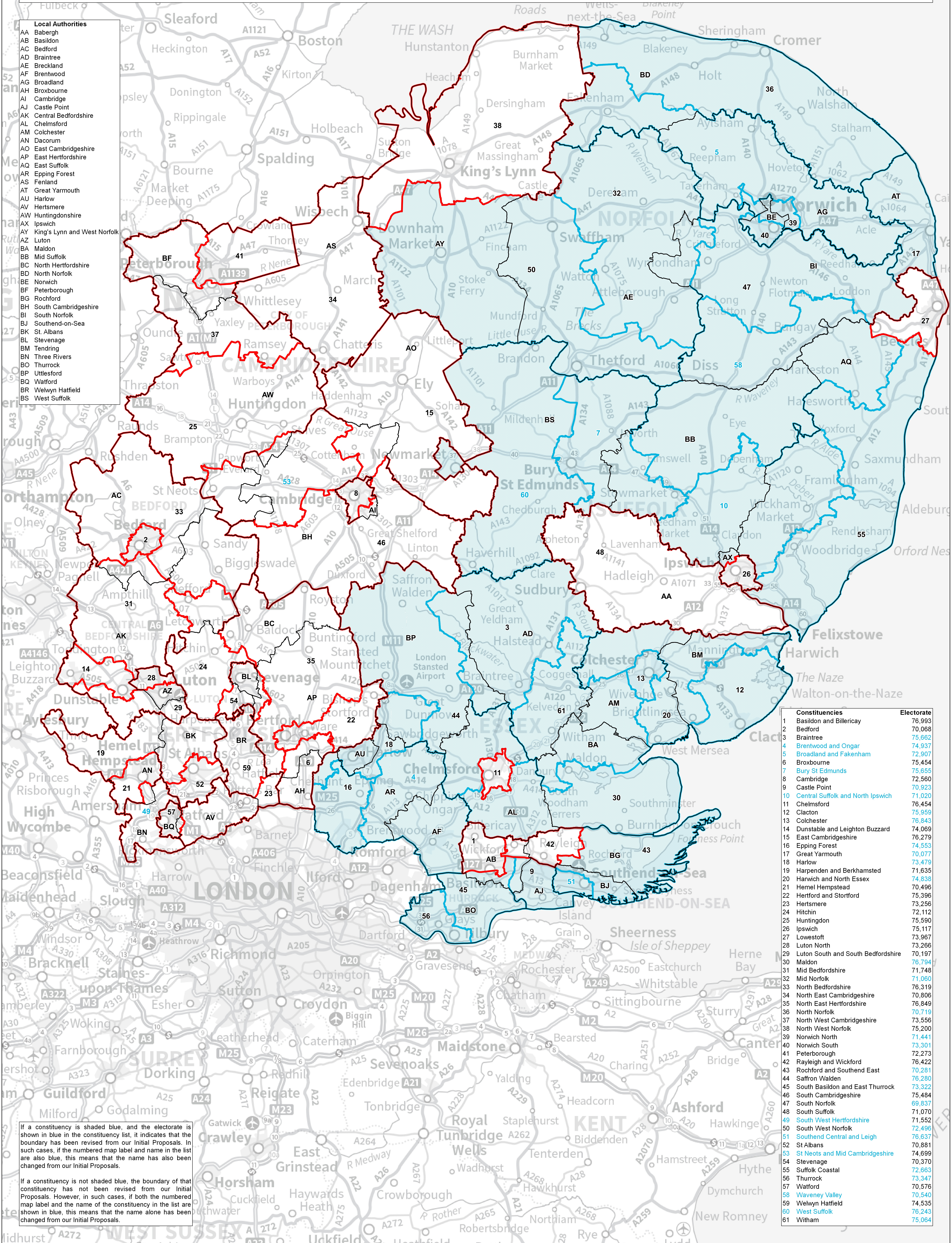


Boundary Commission for England

Revised Proposals for the Eastern Region



- Local Authorities**
- AA Babergh
 - AB Basildon
 - AC Bedford
 - AD Braintree
 - AE Breckland
 - AF Brentwood
 - AG Broadland
 - AH Broxbourne
 - AI Cambridge
 - AJ Castle Point
 - AK Central Bedfordshire
 - AL Chelmsford
 - AM Colchester
 - AN Dacorum
 - AO East Cambridgeshire
 - AP East Hertfordshire
 - AQ East Suffolk
 - AR Epping Forest
 - AS Fenland
 - AT Great Yarmouth
 - AU Harlow
 - AV Hertsmere
 - AW Huntingdonshire
 - AX Ipswich
 - AY King's Lynn and West Norfolk
 - AZ Luton
 - BA Maldon
 - BB Mid Suffolk
 - BC North Hertfordshire
 - BD North Norfolk
 - BE Norwich
 - BF Peterborough
 - BG Rochford
 - BH South Cambridgeshire
 - BI South Norfolk
 - BJ Southend-on-Sea
 - BK St Albans
 - BL Stevenage
 - BM Tendring
 - BN Three Rivers
 - BO Thurrock
 - BP Uttlesford
 - BQ Watford
 - BR Welwyn Hatfield
 - BS West Suffolk



Constituencies	Electorate
1 Basildon and Billericay	76,993
2 Bedford	70,068
3 Braintree	75,662
4 Brentwood and Ongar	74,937
5 Broadland and Fakenham	72,907
6 Broxbourne	75,454
7 Bury St Edmunds	75,655
8 Cambridge	72,560
9 Castle Point	70,923
10 Central Suffolk and North Ipswich	71,020
11 Chelmsford	76,454
12 Clacton	75,959
13 Colchester	76,843
14 Dunstable and Leighton Buzzard	74,069
15 East Cambridgeshire	76,279
16 Epping Forest	74,553
17 Great Yarmouth	70,077
18 Harlow	73,479
19 Harpenden and Berkhamsted	71,635
20 Harwich and North Essex	74,838
21 Hemel Hempstead	70,496
22 Hertford and Stortford	75,396
23 Hertsmere	73,256
24 Hitchin	72,112
25 Huntingdon	75,590
26 Ipswich	75,117
27 Lowestoft	73,967
28 Luton North	73,266
29 Luton South and South Bedfordshire	70,197
30 Maldon	76,794
31 Mid Bedfordshire	71,748
32 Mid Norfolk	71,060
33 North Bedfordshire	76,319
34 North East Cambridgeshire	70,806
35 North East Hertfordshire	76,849
36 North Norfolk	70,719
37 North West Cambridgeshire	73,556
38 North West Norfolk	75,200
39 Norwich North	71,441
40 Norwich South	73,301
41 Peterborough	72,273
42 Rayleigh and Wickford	76,422
43 Rochford and Southend East	70,281
44 Saffron Walden	76,280
45 South Basildon and East Thurrock	73,322
46 South Cambridgeshire	75,484
47 South Norfolk	69,837
48 South Suffolk	71,070
49 South West Hertfordshire	72,552
50 South West Norfolk	71,496
51 Southend Central and Leigh	76,637
52 St Albans	70,881
53 St Neots and Mid Cambridgeshire	74,699
54 Stevenage	70,370
55 Suffolk Coastal	72,663
56 Thurrock	73,347
57 Watford	70,576
58 Waveney Valley	70,540
59 Welwyn Hatfield	74,535
60 West Suffolk	76,243
61 Witham	75,064

Unchanged from Initial Proposals Revised Proposals Local Authorities

0 10 20 km



© Crown copyright and database rights 2023 OS 100016309. You are permitted to use this data solely to enable you to respond to, or interact with, the organisation that provided you with the data. You are not permitted to copy, sub-license, distribute or sell any of this data to third parties in any form. Third party rights to enforce the terms of this licence shall be reserved to OS.