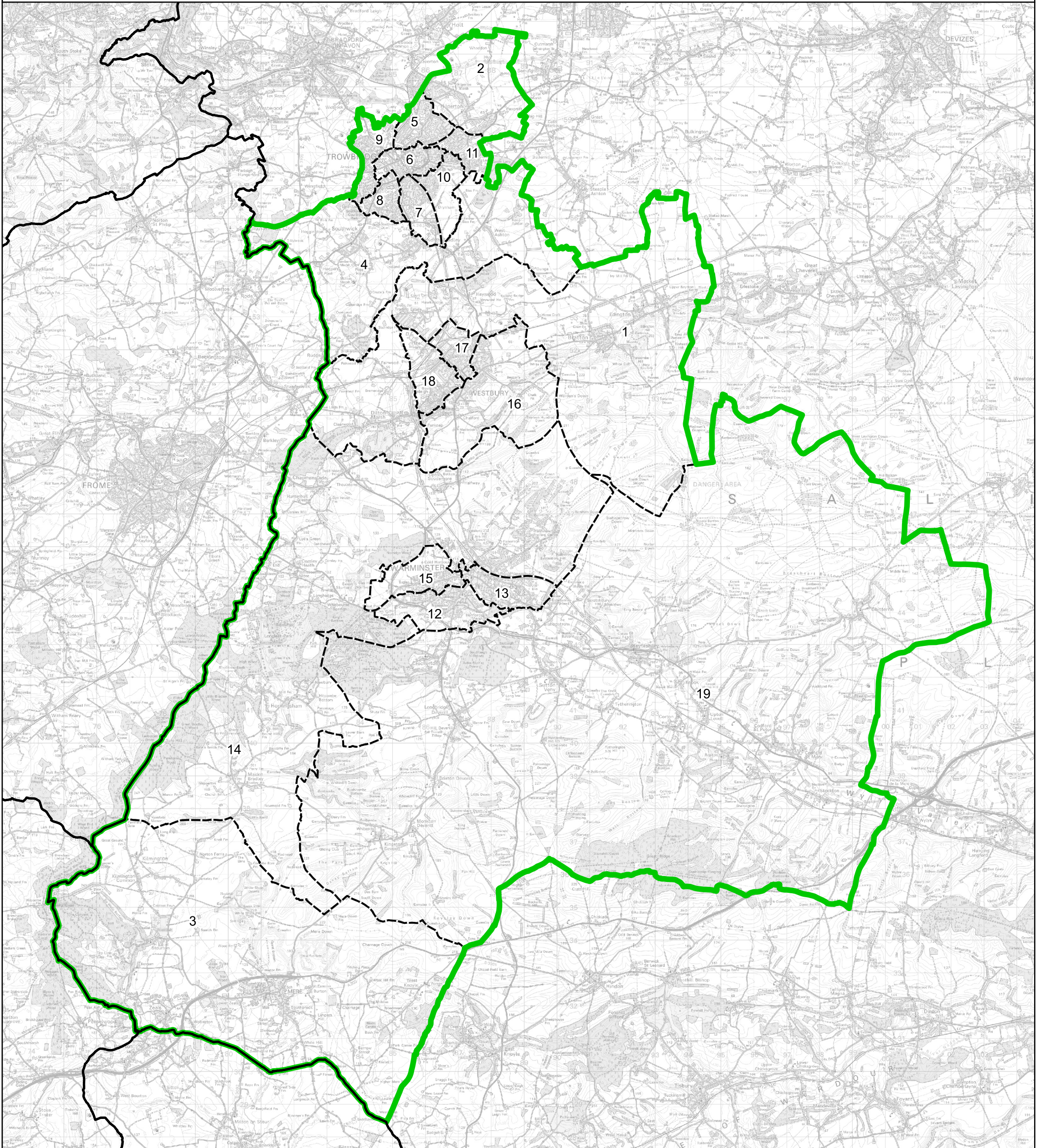


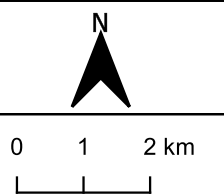
Boundary Commission for England - Final Recommendations for the South West Region
 South West Wiltshire County Constituency - Electorate 71,551



Wards:

- | | | |
|----------------------|-----------------------------|-------------------|
| 1 Ethandune | 9 Trowbridge Lambrok | 16 Westbury East |
| 2 Hilperton | 10 Trowbridge Park | 17 Westbury North |
| 3 Mere | 11 Trowbridge Paxcroft | 18 Westbury West |
| 4 Southwick | 12 Warminster Broadway | 19 Wylde Valley |
| 5 Trowbridge Adcroft | 13 Warminster East | |
| 6 Trowbridge Central | 14 Warminster North & Rural | |
| 7 Trowbridge Drynham | 15 Warminster West | |
| 8 Trowbridge Grove | | |

- Constituency
- Local Authorities
- Wards



© Crown copyright and database rights 2023 OS 100018289. You are permitted to use this data solely to enable you to respond to, or interact with, the organisation that provided you with the data. You are not permitted to copy, sub-licence, distribute or sell any of this data to third parties in any form. Third party rights to enforce the terms of this licence shall be reserved to OS.

South West Wiltshire County Constituency