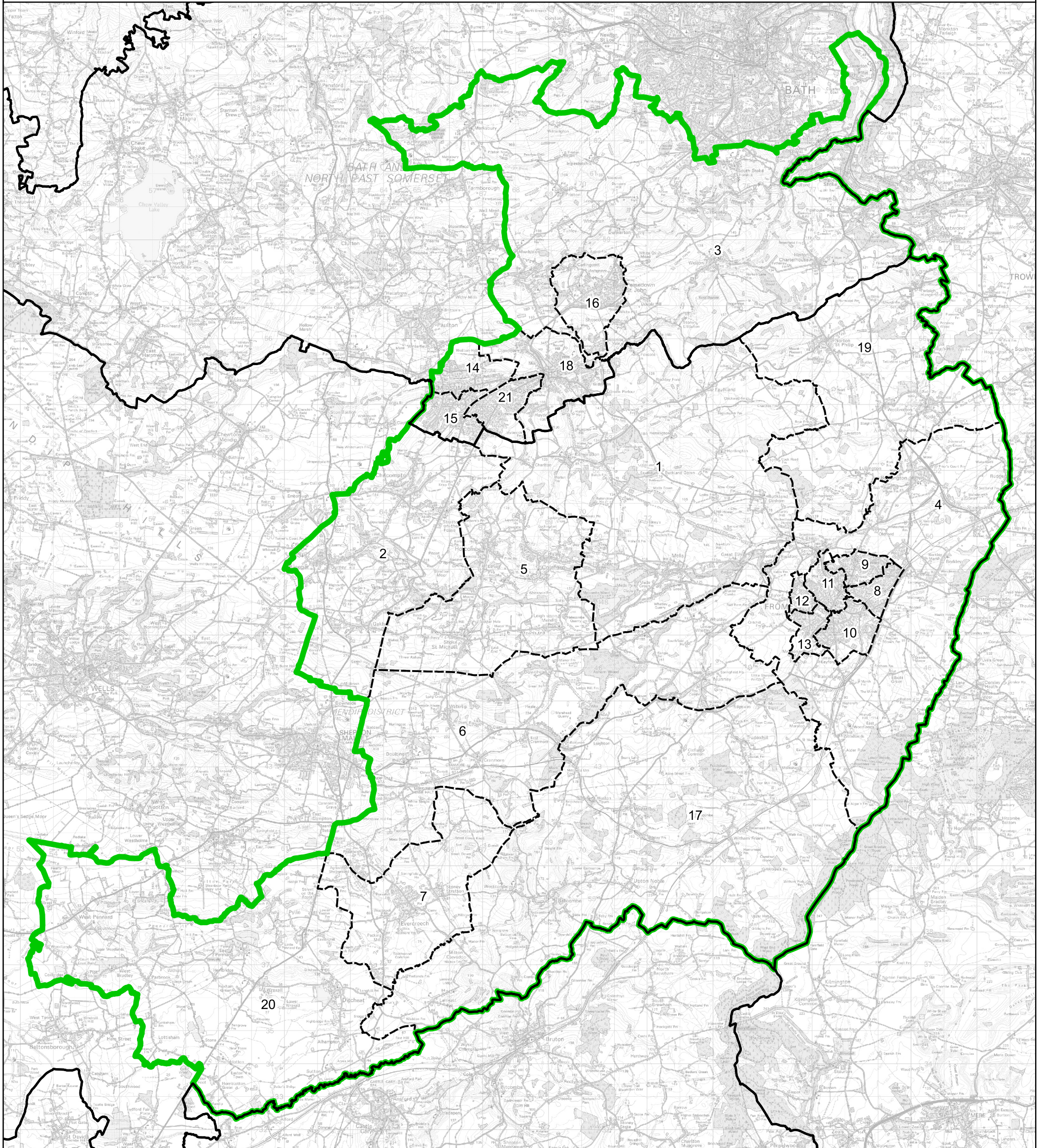


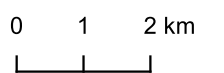
Boundary Commission for England - Final Recommendations for the South West Region
 Frome and East Somerset County Constituency - Electorate 70,177



Wards:

- | | | | |
|-------------------------------------|--------------------------|-------------------------------|------------------------------|
| 1 Ammerdown | 7 Creech | 15 Midsomer Norton Redfield | 20 The Pennards and Ditcheat |
| 2 Ashwick, Chilcompton and Stratton | 8 Frome Berkley Down | 16 Peasedown | 21 Westfield |
| 3 Bathavon South | 9 Frome College | 17 Postlebury | |
| 4 Beckington and Selwood | 10 Frome Keyford | 18 Radstock | |
| 5 Coleford and Holcombe | 11 Frome Market | 19 Rode and Norton St. Philip | |
| 6 Cranmore, Doultling and Nunney | 12 Frome Oakfield | | |
| | 13 Frome Park | | |
| | 14 Midsomer Norton North | | |

- Constituency
- Local Authorities
- Wards



© Crown copyright and database rights 2023 OS 100018289. You are permitted to use this data solely to enable you to respond to, or interact with, the organisation that provided you with the data. You are not permitted to copy, sub-licence, distribute or sell any of this data to third parties in any form. Third party rights to enforce the terms of this licence shall be reserved to OS.

Frome and East Somerset County Constituency