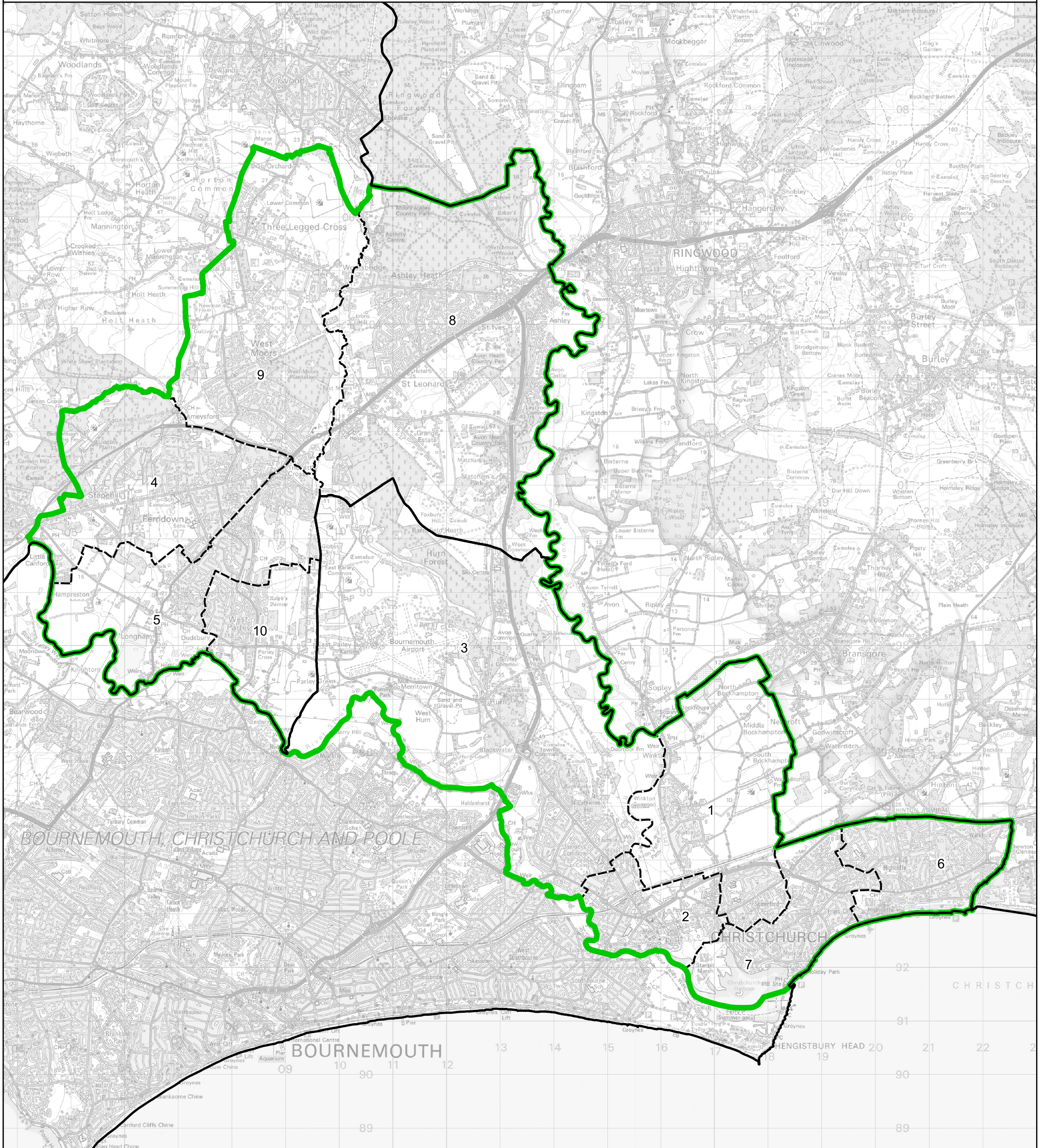


# Boundary Commission for England - Final Recommendations for the South West Region

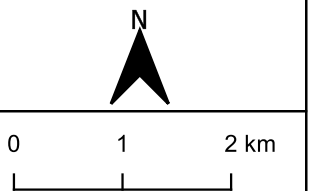
## Christchurch County Constituency - Electorate 71,598



### Wards:

- |                                       |                                   |
|---------------------------------------|-----------------------------------|
| 1 Burton & Grange                     | 8 St. Leonards & St. Ives         |
| 2 Christchurch Town                   | 9 West Moors & Three Legged Cross |
| 3 Commons                             | 10 West Parley                    |
| 4 Ferndown North                      |                                   |
| 5 Ferndown South                      |                                   |
| 6 Highcliffe & Walkford               |                                   |
| 7 Mudeford, Stanpit & West Highcliffe |                                   |

- █ Constituency
- Local Authorities
- Wards



© Crown copyright and database rights 2023 OS 100018289. You are permitted to use this data solely to enable you to respond to, or interact with, the organisation that provided you with the data. You are not permitted to copy, sub-licence, distribute or sell any of this data to third parties in any form. Third party rights to enforce the terms of this licence shall be reserved to OS.

# Christchurch County Constituency