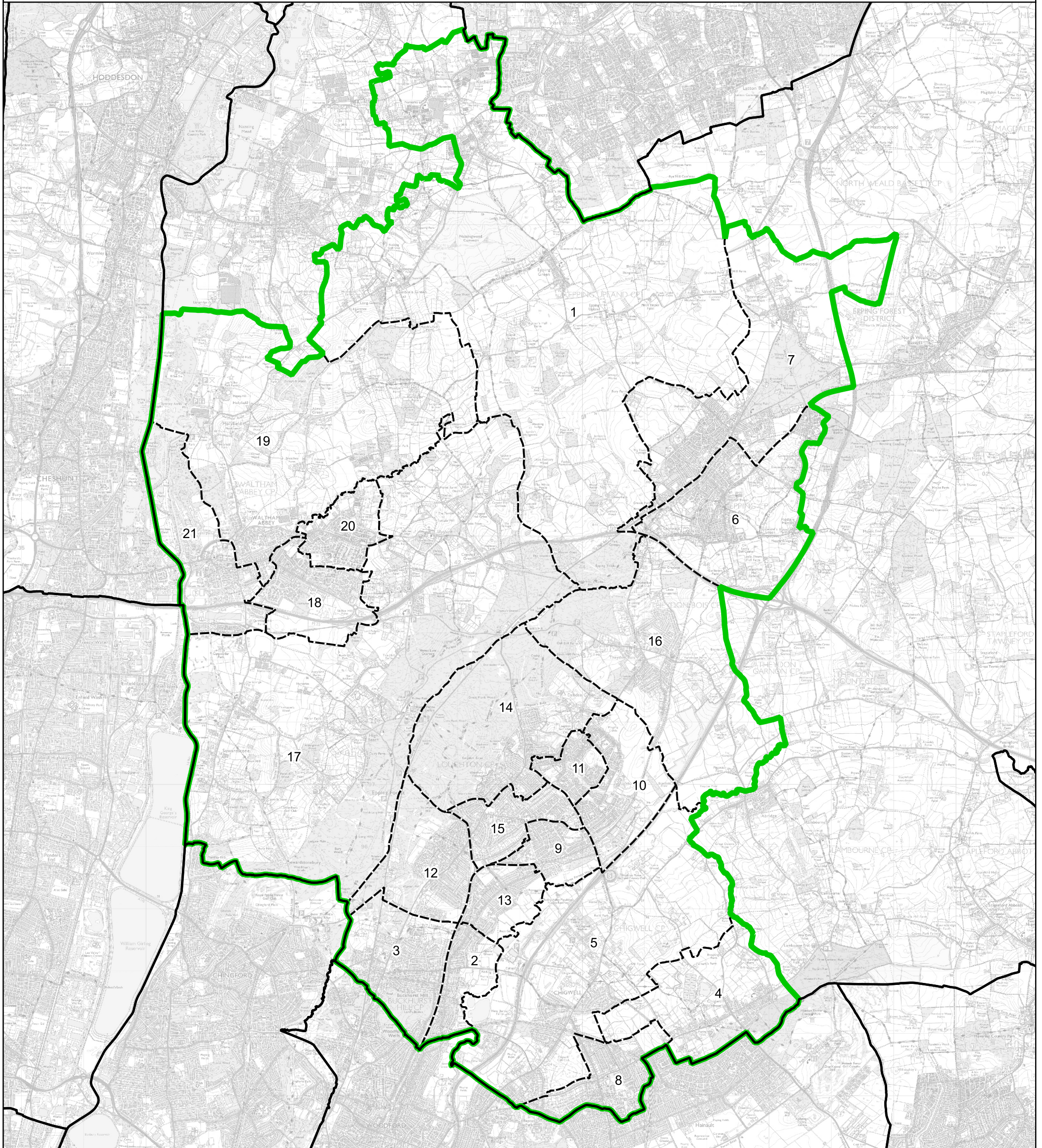


Boundary Commission for England - Final Recommendations for the Eastern Region

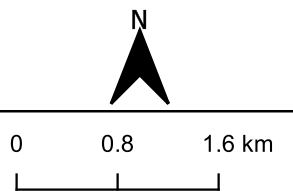
Epping Forest County Constituency - Electorate 74,553



Wards:

- | | | | |
|--|---------------------------------------|-----------------------------|------------------------------|
| 1 Broadley Common, Epping Upland and Nazeing | 7 Epping Lindsey and Thornwood Common | 14 Loughton St. John's | 19 Waltham Abbey North East |
| 2 Buckhurst Hill East | 8 Grange Hill | 15 Loughton St. Mary's | 20 Waltham Abbey Paternoster |
| 3 Buckhurst Hill West | 9 Loughton Alderton | 16 Theydon Bois | 21 Waltham Abbey South West |
| 4 Chigwell Row | 10 Loughton Broadway | 17 Waltham Abbey High Beach | |
| 5 Chigwell Village | 11 Loughton Fairmead | 18 Waltham Abbey Honey Lane | |
| 6 Epping Hemnall | 12 Loughton Forest | | |
| | 13 Loughton Roding | | |

- Constituency
- Local Authorities
- Wards



© Crown copyright and database rights 2023 OS 100018289. You are permitted to use this data solely to enable you to respond to, or interact with, the organisation that provided you with the data. You are not permitted to copy, sub-licence, distribute or sell any of this data to third parties in any form. Third party rights to enforce the terms of this licence shall be reserved to OS.

Epping Forest County Constituency