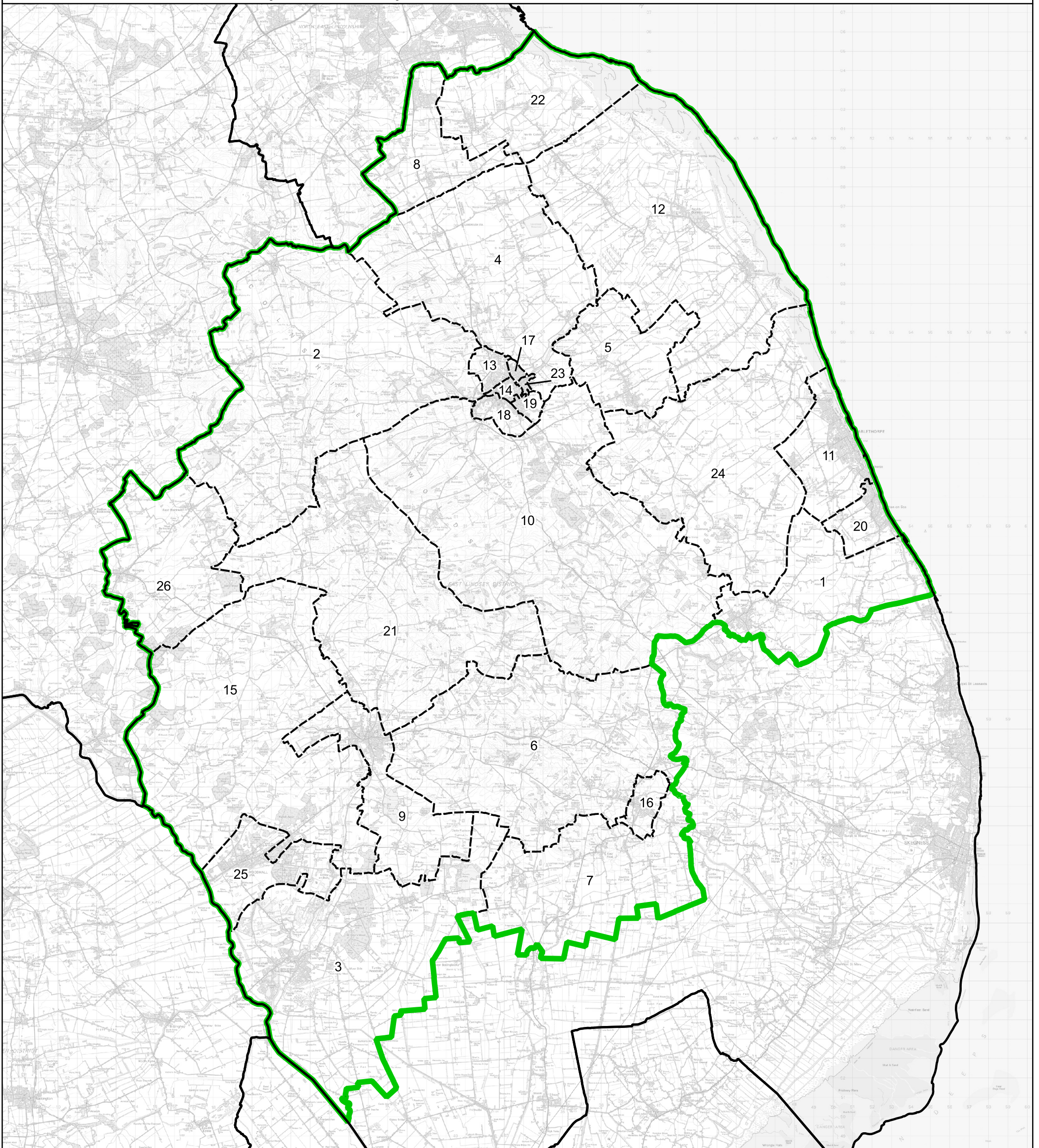


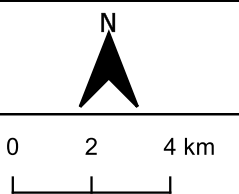
Boundary Commission for England - Final Recommendations for the East Midlands Region
 Louth and Horncastle County Constituency - Electorate 75,959



Wards:

- | | | | |
|-----------------------|-----------------------------------|------------------------|----------------------------|
| 1 Alford | 8 Holton-le-Clay & North Thoresby | 14 Priory & St. James' | 22 Tetney |
| 2 Binbrook | 9 Horncastle | 15 Roughton | 23 Trinity |
| 3 Coningsby & Mareham | 10 Legbourne | 16 Spilsby | 24 Withern & Theddlethorpe |
| 4 Fulstow | 11 Mablethorpe | 17 St. Margaret's | 25 Woodhall Spa |
| 5 Grimoldby | 12 Marshchapel & Somercotes | 18 St. Mary's | 26 Wragby |
| 6 Hagworthingham | 13 North Holme | 19 St. Michael's | |
| 7 Halton Holegate | | 20 Sutton on Sea | |
| | | 21 Tetford & Donington | |

- Constituency
- Local Authorities
- Wards



© Crown copyright and database rights 2023 OS 100018289. You are permitted to use this data solely to enable you to respond to, or interact with, the organisation that provided you with the data. You are not permitted to copy, sub-licence, distribute or sell any of this data to third parties in any form. Third party rights to enforce the terms of this licence shall be reserved to OS.

Louth and Horncastle County Constituency