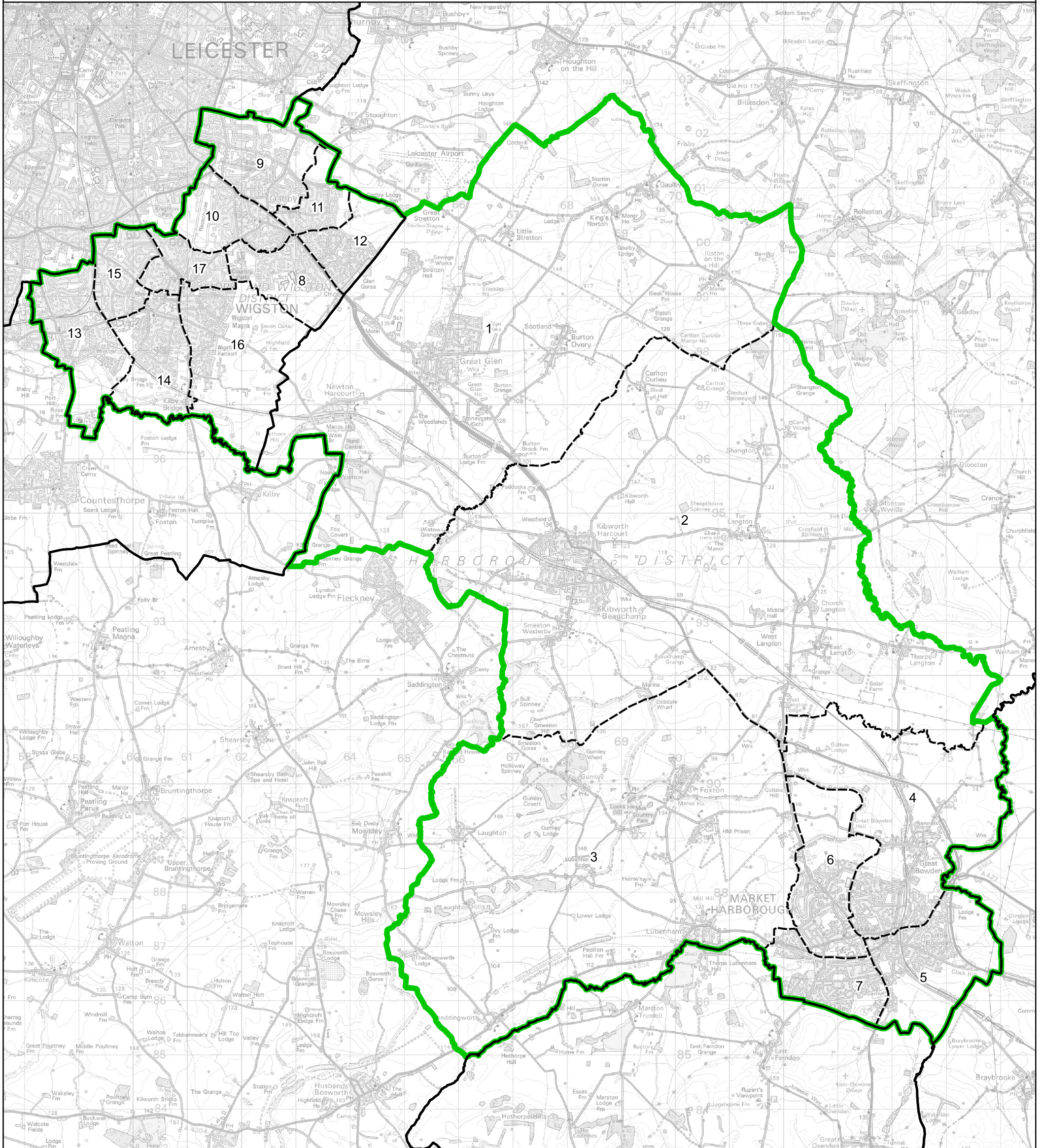





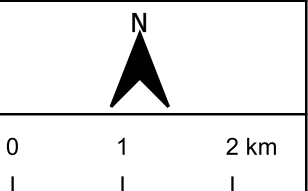
Boundary Commission for England - Final Recommendations for the East Midlands Region
 Harborough, Oadby and Wigston County Constituency - Electorate 74,810



Wards:

- | | | |
|------------------------------------------|-----------------------------|--------------------------|
| 1 Glen | 6 Market Harborough-Logan | 12 Oadby Woodlands |
| 2 Kibworths | 7 Market Harborough-Welland | 13 South Wigston |
| 3 Lubenham | 8 Oadby Brocks Hill | 14 Wigston All Saints |
| 4 Market Harborough-Great Bowden & Arden | 9 Oadby Grange | 15 Wigston Fields |
| 5 Market Harborough-Little Bowden | 10 Oadby St. Peter's | 16 Wigston Meadowcourt |
| | 11 Oadby Uplands | 17 Wigston St. Wolstan's |

-  Constituency
-  Local Authorities
-  Wards



© Crown copyright and database rights 2023 OS 100018289. You are permitted to use this data solely to enable you to respond to, or interact with, the organisation that provided you with the data. You are not permitted to copy, sub-licence, distribute or sell any of this data to third parties in any form. Third party rights to enforce the terms of this licence shall be reserved to OS.

Harborough, Oadby and Wigston County Constituency