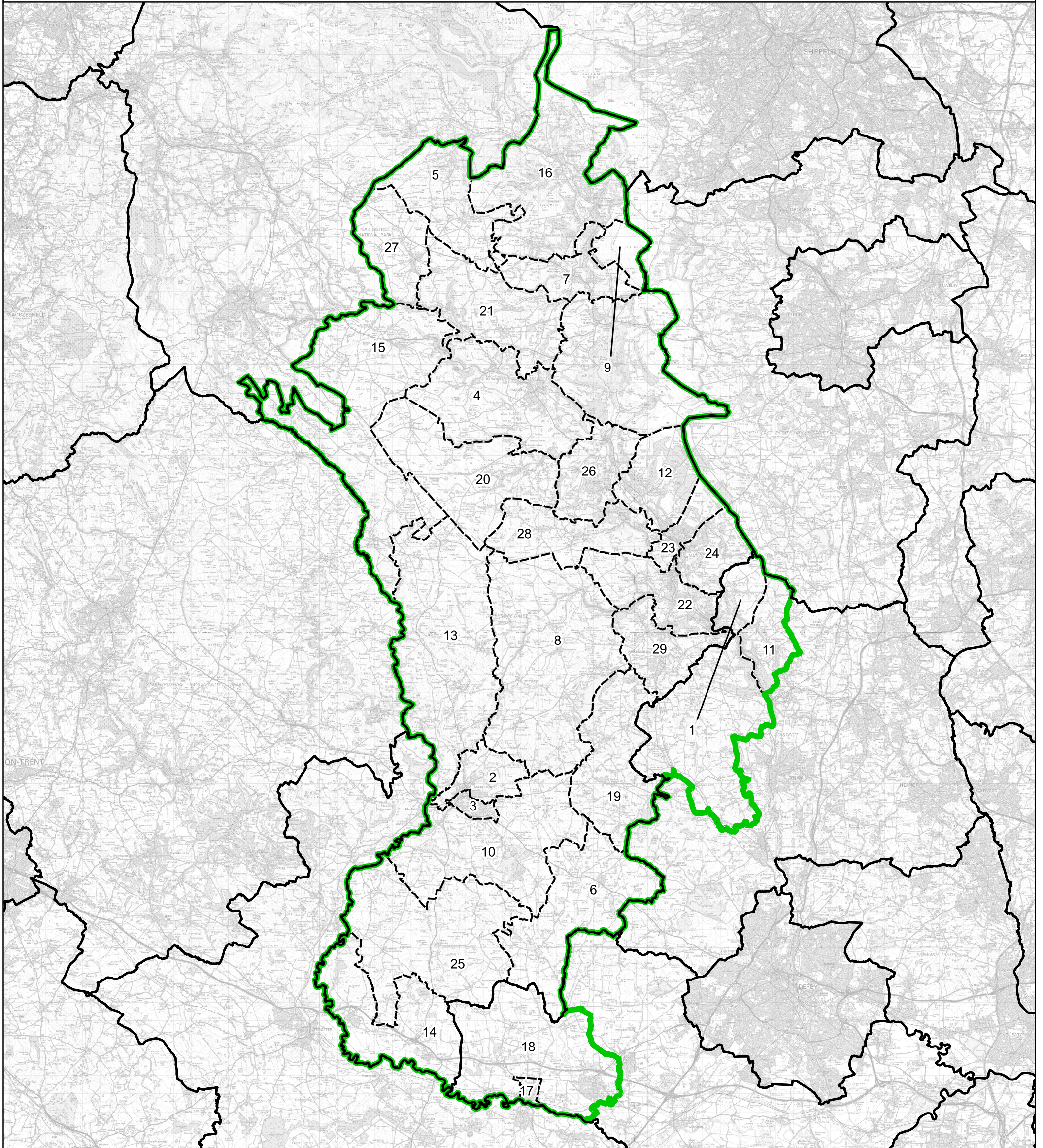


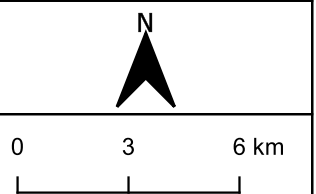
Boundary Commission for England - Final Recommendations for the East Midlands Region  
 Derbyshire Dales County Constituency - Electorate 71,435



Wards:

|                    |                              |                          |                             |
|--------------------|------------------------------|--------------------------|-----------------------------|
| 1 Alport           | 9 Chatsworth                 | 16 Hathersage and Eyam   | 24 Matlock St. Giles        |
| 2 Ashbourne North  | 10 Clifton and Bradley       | 17 Hatton                | 25 Norbury                  |
| 3 Ashbourne South  | 11 Crich                     | 18 Hilton                | 26 Stanton                  |
| 4 Bakewell         | 12 Darley Dale               | 19 Hulland               | 27 Tideswell                |
| 5 Bradwell         | 13 Dovedale and Parwich      | 20 Lathkill and Bradford | 28 Winster and South Darley |
| 6 Brailsford       | 14 Doveridge and Sudbury     | 21 Litton and Longstone  | 29 Wirksworth               |
| 7 Calver           | 15 Hartington and Taddington | 22 Masson                |                             |
| 8 Carsington Water |                              | 23 Matlock All Saints    |                             |

- Constituency
- Local Authorities
- Wards



© Crown copyright and database rights 2023 OS 100018289. You are permitted to use this data solely to enable you to respond to, or interact with, the organisation that provided you with the data. You are not permitted to copy, sub-licence, distribute or sell any of this data to third parties in any form. Third party rights to enforce the terms of this licence shall be reserved to OS.

# Derbyshire Dales County Constituency