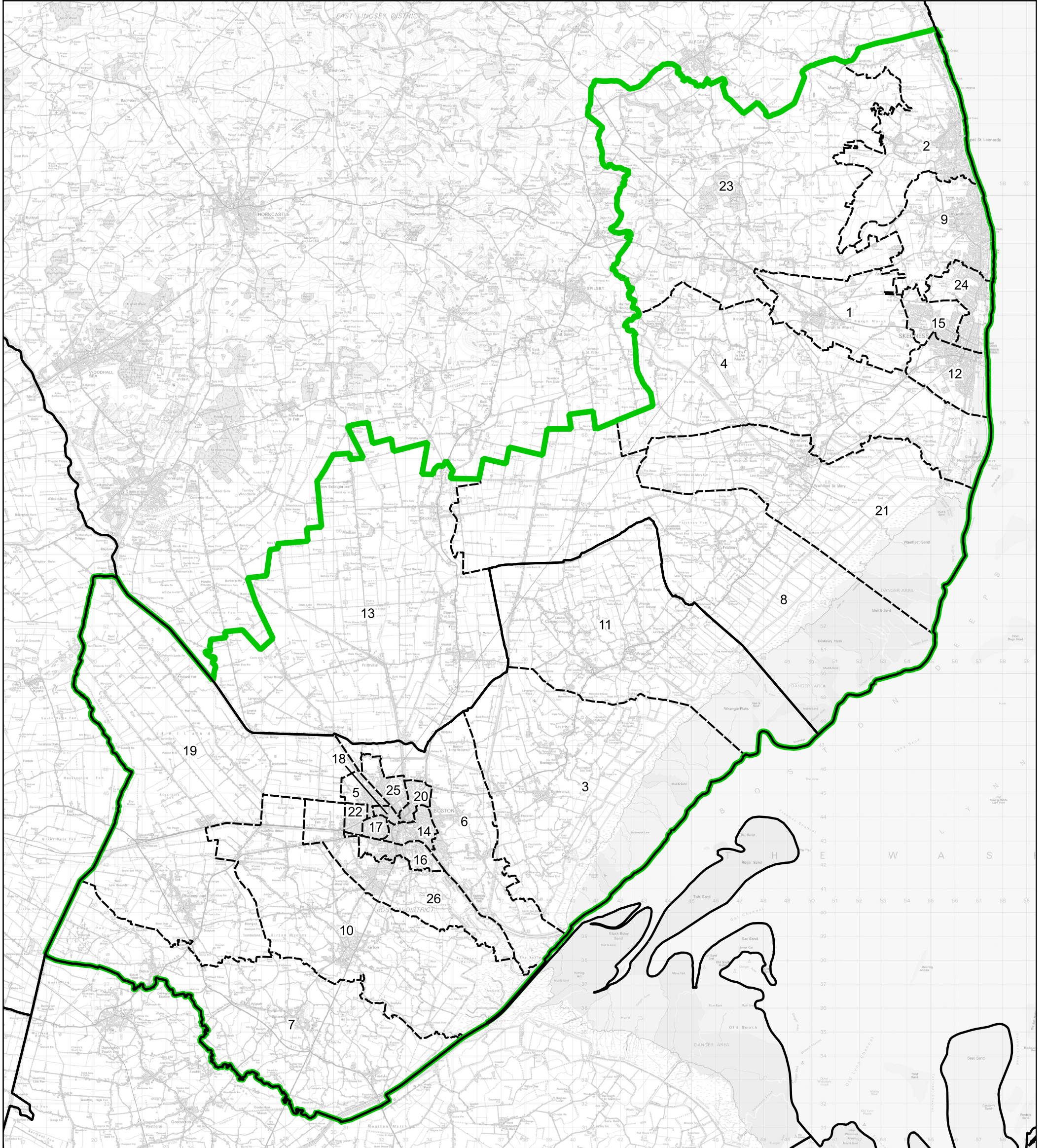


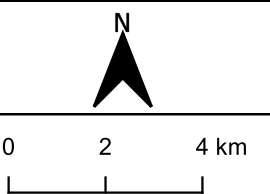
Boundary Commission for England - Final Recommendations for the East Midlands Region  
 Boston and Skegness County Constituency - Electorate 75,806



Wards:

- |                       |                          |                               |                             |
|-----------------------|--------------------------|-------------------------------|-----------------------------|
| 1 Burgh le Marsh      | 9 Ingoldmells            | 17 Staniland                  | 23 Willoughby with Sloothby |
| 2 Chapel St. Leonards | 10 Kirton and Frampton   | 18 Station                    | 24 Winthorpe                |
| 3 Coastal             | 11 Old Leake and Wrangle | 19 Swineshead and Holland Fen | 25 Witham                   |
| 4 Croft               | 12 Scarbrough & Seacroft | 20 Trinity                    | 26 Wyberton                 |
| 5 Fenside             | 13 Sibsey & Stickney     | 21 Wainfleet                  |                             |
| 6 Fishtoft            | 14 Skirbeck              | 22 West                       |                             |
| 7 Five Village        | 15 St. Clement's         |                               |                             |
| 8 Friskney            | 16 St. Thomas'           |                               |                             |

- Constituency
- Local Authorities
- Wards



© Crown copyright and database rights 2023 OS 100018289. You are permitted to use this data solely to enable you to respond to, or interact with, the organisation that provided you with the data. You are not permitted to copy, sub-licence, distribute or sell any of this data to third parties in any form. Third party rights to enforce the terms of this licence shall be reserved to OS.

# Boston and Skegness County Constituency