



2018 Review of Parliamentary Constituencies

Partner Guide

September 2016



Contents

Introduction

About the review

Key messages

How to get involved

Resources

FAQ

Introduction

Dear partner,

We'd like your help to promote a public consultation on new Parliamentary constituency boundaries in England.

On 13 September 2016 we will publish initial proposals for new constituencies. These proposals will reduce the overall number of constituencies and make them more equal in terms of the numbers of electors each contains. This will be followed by a 12-week consultation period, where we want people to tell us whether they agree with the proposed changes, ensuring those responses capture the views and knowledge of local residents.

We need your help to spread the message that it's easy for people to get involved and that all views genuinely count. The proposals will be available to view online, and people can share feedback through our consultation website, or at public hearings across England. We will consider every piece of feedback that we receive.

There will be two further consultations: one on the feedback received in response to our initial proposals (most likely around spring 2017); and finally one on a complete set of revised proposals (most likely in late 2017). We will look at all the evidence received and make any final changes to the proposals for new constituency boundaries. Those final recommendations and an accompanying report will be published and presented to Parliament in September 2018. It will then be for Parliament to decide whether to implement the recommendations for the next scheduled general election in 2020.

Please get involved and help your local communities have their say!

You will find a number of resources outlined within this guide to help you with this.

About the review

Following a decision by Parliament to reduce the number of constituencies in the UK to 600 (from 650), and to ensure that there are roughly the same number of electors in each constituency, the Boundary Commission for England will make independent recommendations about where the boundaries of English constituencies should be. There will be a reduction in the number of English constituencies from the current 533 to 501. We will publish the initial proposals – the first time people get a look at what the map of constituencies might look like – on 13 September 2016. An initial 12-week consultation will follow, ending on 5 December 2016.

How people can get involved

We want to ensure the final recommendations reflect the views and knowledge of local residents and communities. If people want to have their say, it is easier than ever:

- People can view the proposed changes online (www.bce2018.org.uk) and submit any comments direct to us through the consultation website
- They can give us their views in person at any of the 36 public hearings being held across the English regions (information about these hearings can be found on our website)

Contact information for partners

If you wish to get in touch with us at any time, you can:

- E-mail us at: information@boundarycommissionengland.gov.uk
- Call us on: 020 7276 1102
- Write to us at: Boundary Commission for England, 35 Great Smith Street, London, SW1P 3BQ

Key messages

The independent Boundary Commission for England has published proposals to reduce the number of parliamentary constituencies in England to make them more equal.

The Boundary Commission for England want to hear from local residents and communities, to make sure their final recommendations to Parliament take account of local views and knowledge.

It's easy to have your say. You can view and comment on the proposed changes online at www.bce2018.org.uk or come and speak to the Commission in person at one of 36 local public hearings taking place across England in October and November.

Find out more at www.bce2018.org.uk

How to get involved

We want as many people as possible to have their say on the proposed new boundaries. Feel free to use any or all of the tools and resources in this guide to help share the message.

- Follow us on social media and regularly update your organisation's social media platforms. We have provided some suggested copy and graphics for you to use in tweets and Facebook posts.
- Link to the consultation website (where people can view and comment on the proposed changes) from your organisation's website or your internal and external bulletins/newsletters.
- Distribute the campaign materials at your venues and events. We also encourage you to share the message far and wide within your networks, including arm's-length management organisations, housing associations, community groups and your internal staff. We have provided graphics for a poster that you can use.
- Send a press notice to local media encouraging others to share their views.
- Blog about it. We have included a sample blog if you want to carry one from us, or you could write your own.
- Attend a public hearing and share your views in person.

Resources: Social media

Follow us on social media and regularly update your organisation's social media platforms. We have provided some suggested copy and graphics for you to use in tweets and Facebook posts on the next page, but feel free to come up with the best approach for your audience.

Follow us

Facebook – <https://www.facebook.com/BCommEngland/>

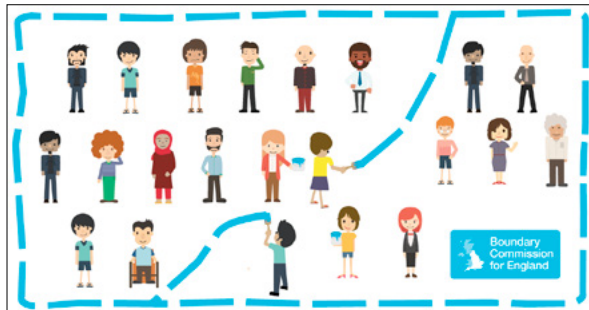
Twitter – [@BCE2018](https://twitter.com/BCE2018)

Share a post on Facebook or send a tweet

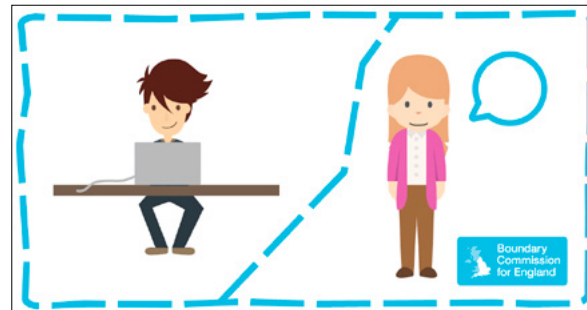
If you are using Twitter you can use [#2018boundaryreview](https://twitter.com/hashtag/2018boundaryreview) in posts and tag us [@BCE2018](https://twitter.com/BCE2018) or on Facebook you can tag us [@BCommEngland](https://www.facebook.com/BCommEngland/)

Resources: Social media

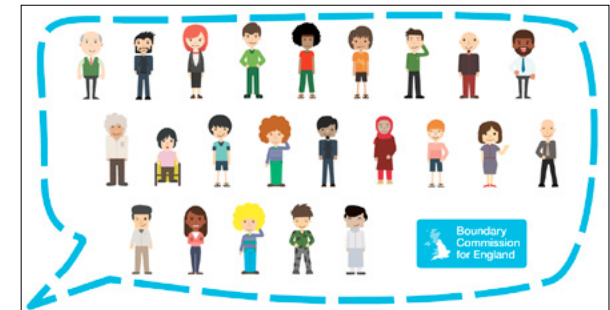
You can share these infographics on Facebook or Twitter and we have suggested some messaging to help you with this, but please feel free to come up with the best approach for your audience.



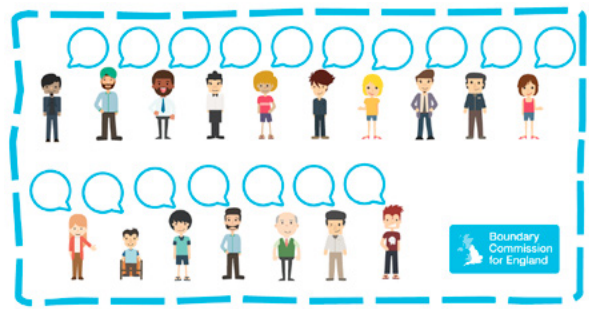
Help re-draw the Parliamentary map for your area
www.bce2018.org.uk



Share your views on the new parliamentary boundaries online or at a local public hearing
www.bce2018.org.uk



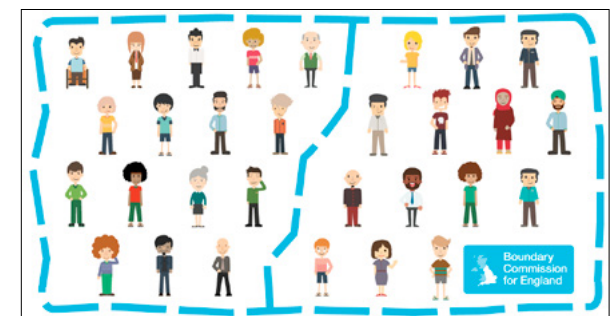
Local knowledge needed to help shape new constituency boundaries. Have your say
www.bce2018.org.uk



Join others from <insert your area here> and share local views on proposed boundary changes
www.bce2018.org.uk



There's still time to have your say on proposed boundary changes for your area
www.bce2018.org.uk



Boundaries are changing to make constituencies more equal. Share your views here:
www.bce2018.org.uk

Downloads

Facebook infographics [↗](#)

Twitter infographics [↗](#)

Resources: Sample messages for websites/bulletins

Link to the consultation website (where people can view and comment on the proposed changes) from your organisation's website or newsletter/bulletins.

Website text

Did you know that Parliamentary constituencies are set to change? The independent Boundary Commission for England (BCE) has announced proposals for changes to constituencies in England for the next General Election and needs your help to shape their final recommendations, ensuring they take into consideration local knowledge and views.

From the 13 September there will be a 12-week consultation allowing you to share your knowledge about your local area. It is easier than ever to get involved, and the BCE considers every piece of feedback that it receives, whether that is about where the constituency boundaries should be, the name of the constituency, or even what type of constituency it should be.

Go online to view interactive maps showing the proposed changes. You can send feedback on the changes through the website in a couple of minutes. You can also attend one of the public hearings the BCE will be holding across England to give your views in person.

Find out more at www.bce2018.org.uk


Newsletter/bulletin text

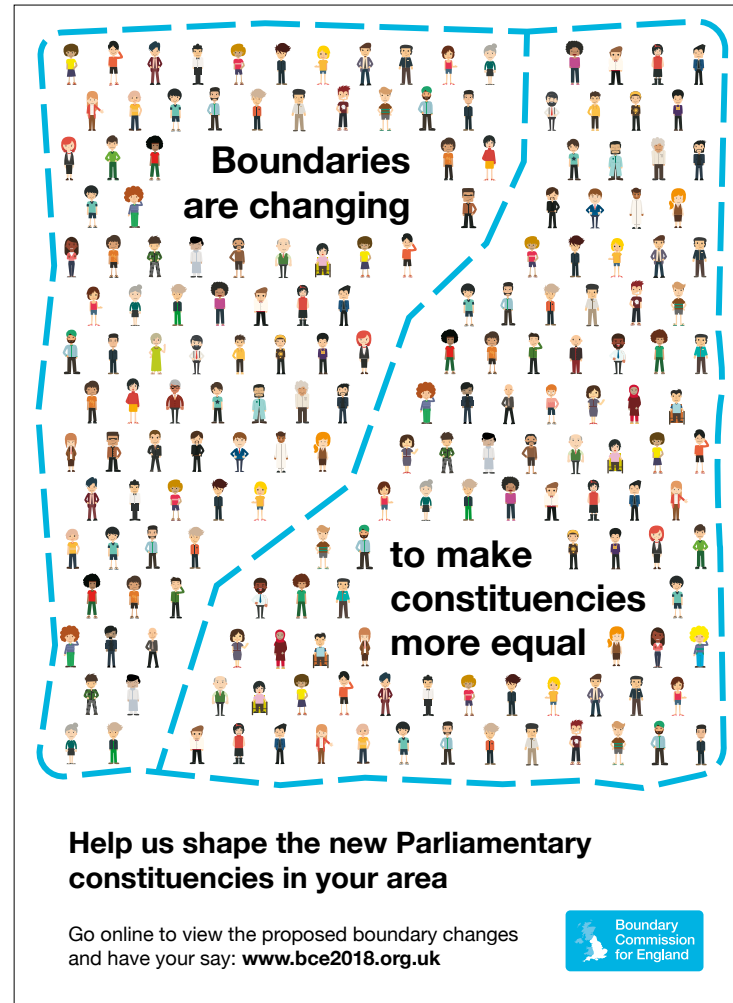
The independent Boundary Commission for England (BCE) has published proposals to reduce the number of Parliamentary constituencies across England and to make them more equal. Go online at www.bce2018.org.uk to view and comment on the proposals or you can attend a public hearing throughout October/November to have your say in person. Don't miss out – contribute your local knowledge and have your say on what the new constituencies should be by Monday 5 December 2016.

Resources: Poster

Downloads

Poster for print 

Poster for screen 




**Boundaries
are changing**

**to make
constituencies
more equal**

**Help us shape the new Parliamentary
constituencies in your area**

Go online to view the proposed boundary changes
and have your say: www.bce2018.org.uk

 Boundary
Commission
for England

Resources: Press notice

You could consider sending a press notice to local media, encouraging others to share their views. You can find a template press notice on the BCE website or use the link below.

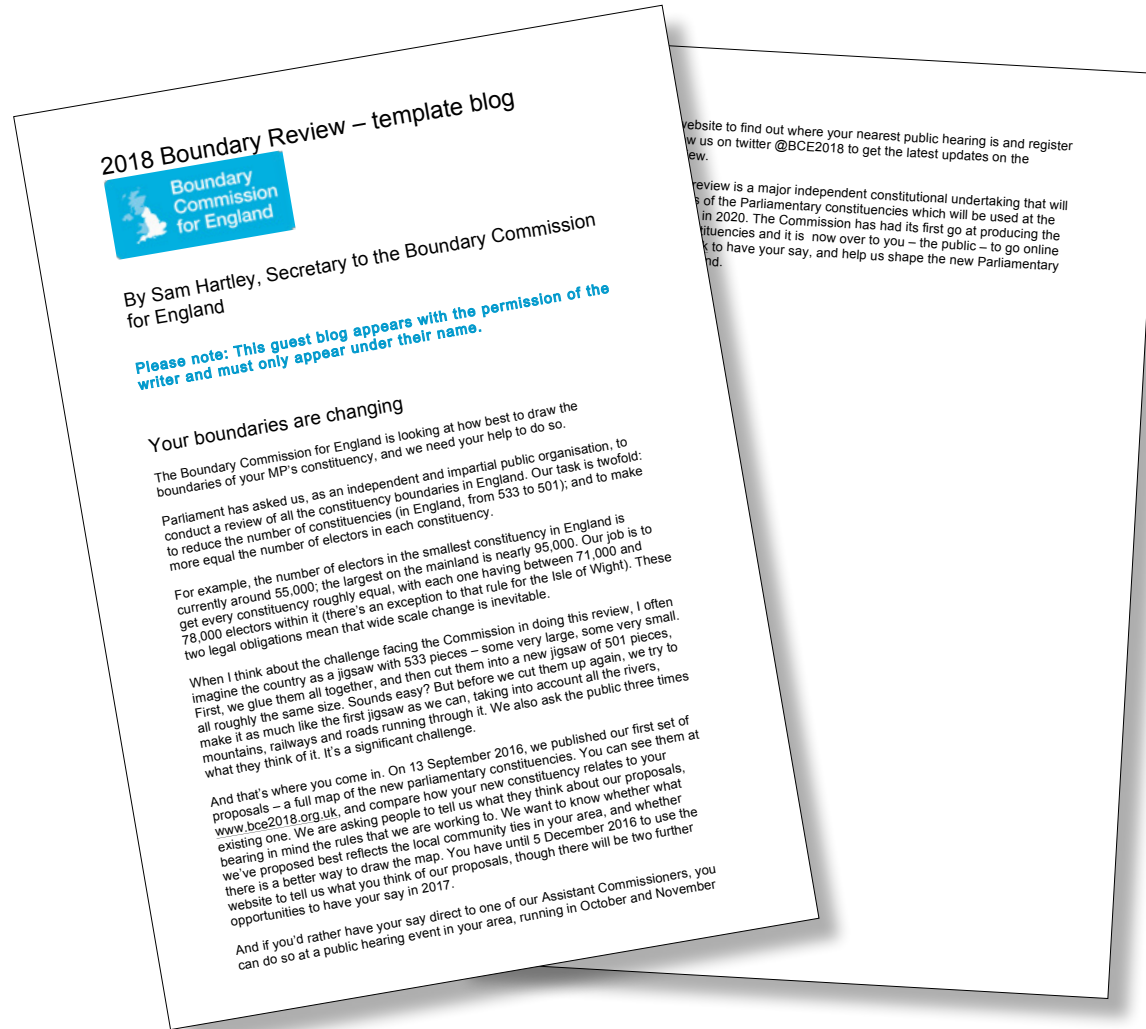
Download 



Resources: Blog post

Why not carry a blog about the review through your channels. Here is a sample one from the Secretary to the Boundary Commission that you could use.

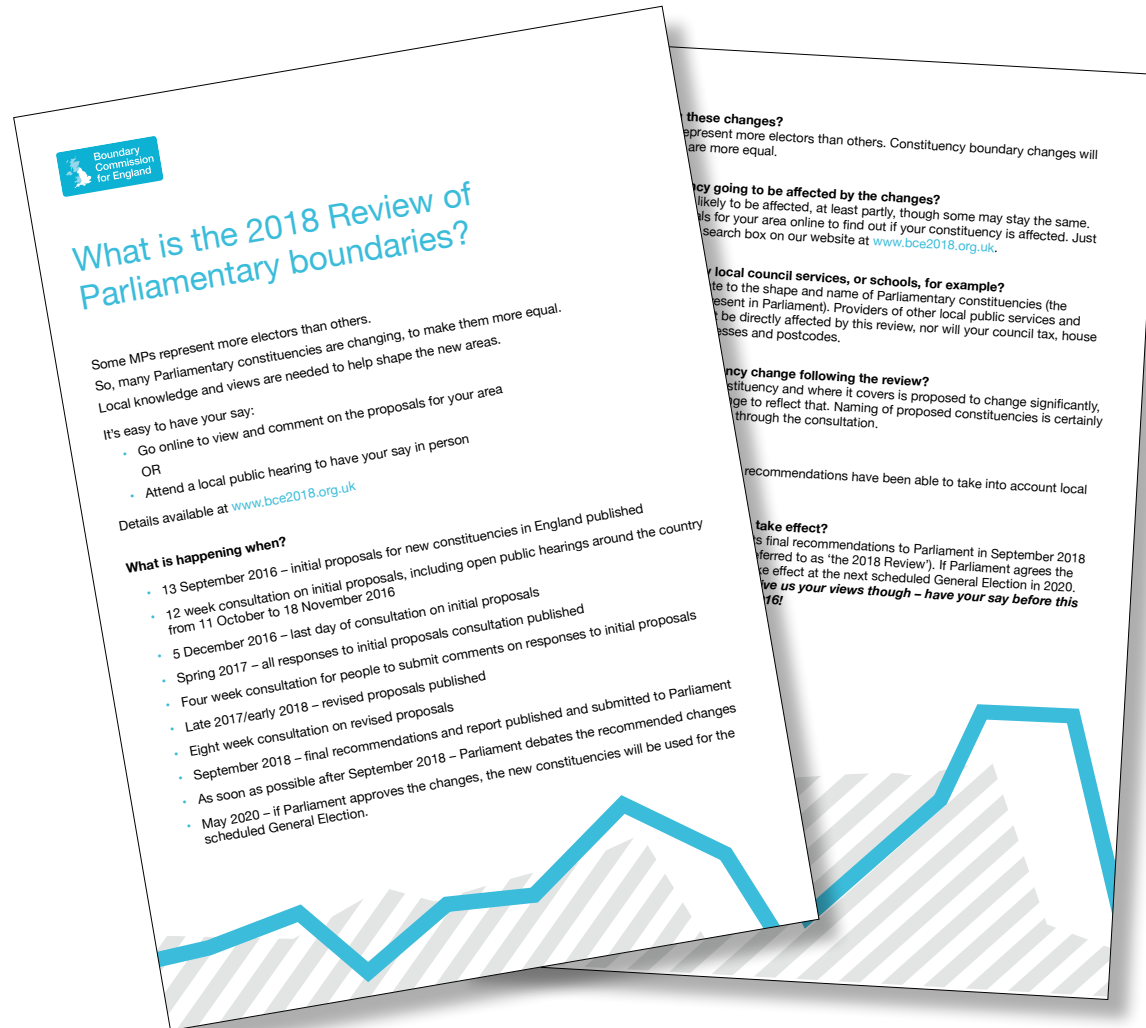
Download 



Resources: Fact sheet leaflet

Here's a fact sheet leaflet with essential information about the review that you can easily print off (it fits on the back and front of a sheet of A4 paper) and give to anyone who is interested.

Download 



FAQ

Why are you reviewing constituency boundaries?

We have been asked by Parliament to review constituencies in England to ensure that there is a more even distribution of electors across them. Parliament also required the number of UK MPs to be reduced to 600 (there are currently 650). This means the number of constituencies in England will be reduced by 32, from 533 to 501. A review process is necessary to see how best these two significant requirements can be implemented, as their combined effect will lead to some change in a large number of constituencies across England.

How do you work out the proposed changes to boundaries?

The law specifies how to calculate the 'electoral quota' for a constituency review. This is essentially the mean average number of electors for each constituency. The electoral quota for this review is 74,769. Under the rules, every constituency in the UK – except two covering the Isle of Wight and two Scottish island constituencies – must have a number of registered electors within 5% of this figure. This means no constituency will have an electorate of more than 78,507 or less than 71,031 (other than the four island exceptions).

Will my MP or constituency be affected by the boundary changes?

The number of constituencies in England will need to fall by 32, from 533 to 501, and each will need to have a similar number of electors. To implement these requirements, there will need to be changes to the majority of constituencies. View the proposals online for your particular area to find out more.

When would the proposed changes take effect?

The Boundary Commission will make its final recommendations to Parliament in September 2018. If Parliament agrees the changes to boundaries, the new constituencies will take effect at the next scheduled General Election in 2020.

Will this review favour one political party over another?

The Boundary Commission for England is independent and impartial and will not take into account patterns of voting or the results of elections when reviewing constituency boundaries. Nor do the political parties' views on where boundaries should be have any more weight than those of members of the public.

How long will the review last?

Initial proposals are being published in September 2016, with final recommendations submitted to Parliament in September 2018.

Why do you need my views?

We want to make sure that the final recommendations have taken local views and knowledge into consideration.

How can I share my views?

There are a number of ways to comment on the proposals.

Online: you can go online at www.bce2018.org.uk; enter your postcode and view and comment on proposed new Parliamentary constituencies in your local area.

In person: you can attend one of 36 public hearings being held across the regions of England and share your views with the BCE.

Equal consideration will be given to all feedback.

Will the changes affect my local council services, bin collections or schools, for example?

No. The boundary changes only relate to Parliamentary constituencies (the area an MP is elected to represent in Parliament). Services and council tax in your local area are set by your local authority and this review does not change local authority boundaries.

Who will make final decisions on the new boundary areas?

Parliament will make the final decisions. The review will finish when the final report of the Commission's recommendations is published and provided to the Government in September 2018. The recommendations must then be put before Parliament by the Government, and Parliament will decide whether or not to implement the recommended new constituencies.

Will the name of my constituency change following the review?

Possibly. As well as looking at where the boundaries of constituencies should be, the BCE will recommend a specific name for each constituency. Generally, the more a constituency has changed, the more likely it is that the BCE will recommend a change of name. Naming of proposed constituencies is certainly something the BCE welcomes views on during the consultation periods.

You can find a more detailed list of questions online at:

www.bce2018.org.uk/faq